

Memorial Stadium Redevelopment

Seattle Design Commission
01.16.2024



GENERATOR
STUDIO

SWIFT COMPANY LLC

Agenda

- 1 Project Update
- 2 Project Visions, Goals, and Principles
- 3 Stadium Program / Design
- 4 Sustainability
- 5 Site Program / Design
- 6 Lighting
- 7 Next Steps
- 8 Discussion



Project Update



SPS / SC Update

- UPDATE to include tangible outcomes of outreach efforts. (Art walls discussion, etc.) i.e. What are the fruits of our labor?



One Roof Update

- UPDATE - development agreement?



Public Art Update

- UPDATE - Artist selected. David K. to provide more info.



Project Visions, Goals and Principles



Project Goals

- Student First Focus
- Provide Community Access and Activation
- Engage the Seattle Center Campus
- DEIA + Sustainability Targets
- Create Meaningful Partnership Opportunities
- Find Sustainable Development + Operating Costs



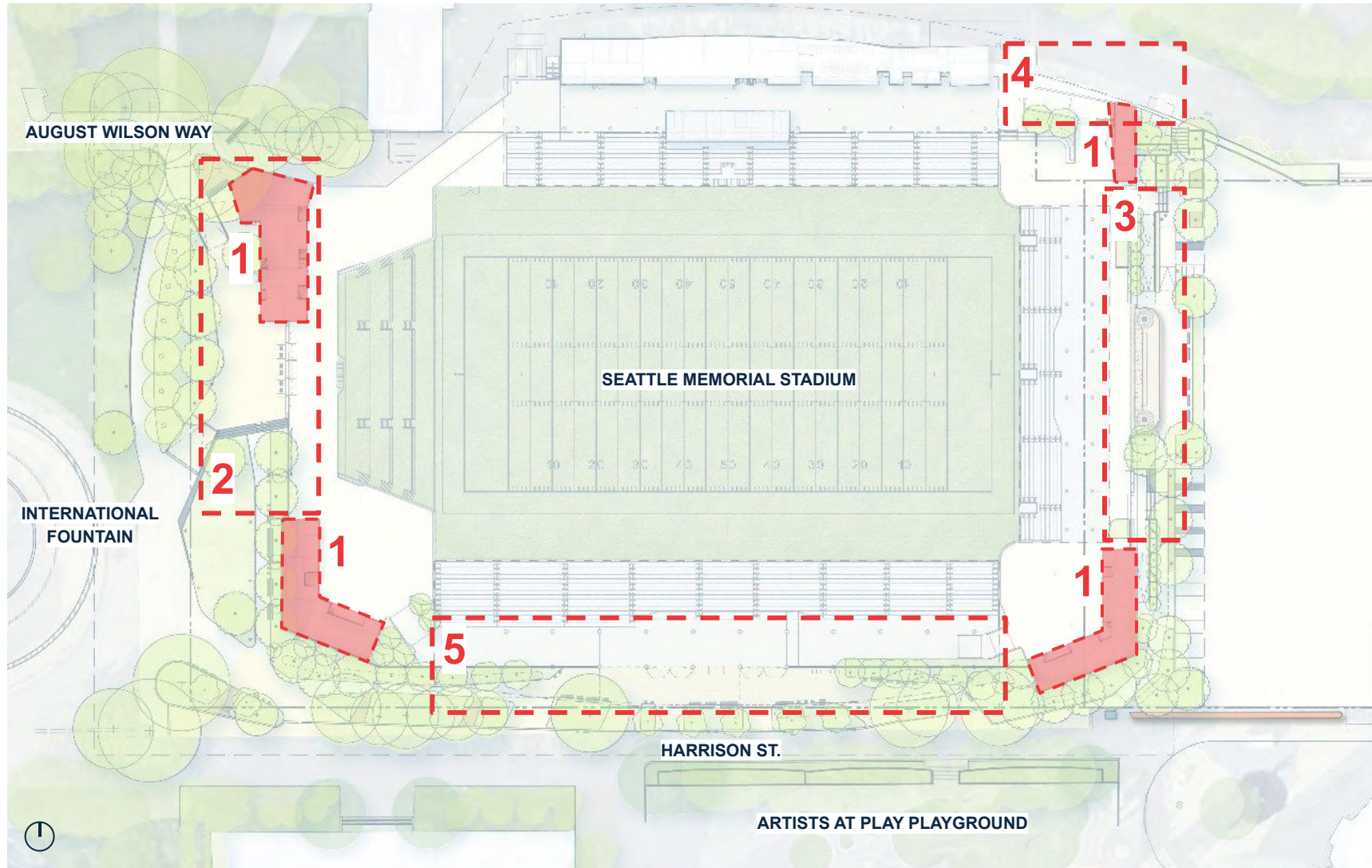
Project Principles

- World class stadium for Seattle youth + community
- Outside-in design - integrated into the Seattle Center context
- Provide community spaces supported by flexible amenities
- Celebrate students through art, activation and technology
- Restore Memorial Wall and provide pride of place
- Multi-functional field of play and stadium



Stadium Program / Design

Areas of Refinement



1

Corner Pavilions
Public Facing Precast Walls
Concourse Art Walls

2

West Exterior Activation
NW Cafe, West Entry Gate,
Custom Fence (Tribal Art Opportunity)

3

East Exterior Activation
East Entry Gates
Memorial Wall - Restored Fountains

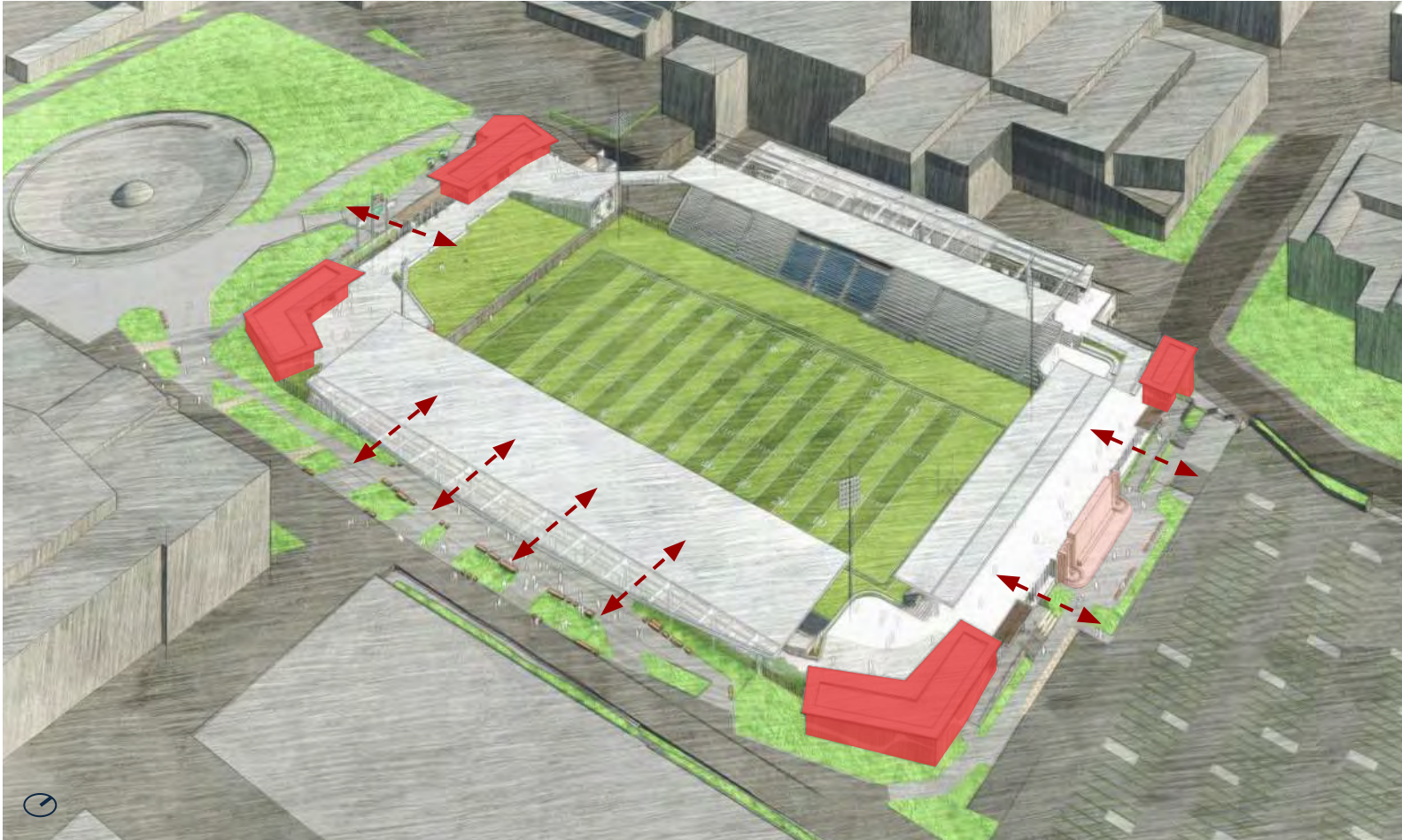
4

Northeast Field Entry Tunnel
Player Entry Experience

5

Harrison St. Activation
South Canopy Lighting/Activation

Corner Pavilions



SDC recommendation from 10/17/24:

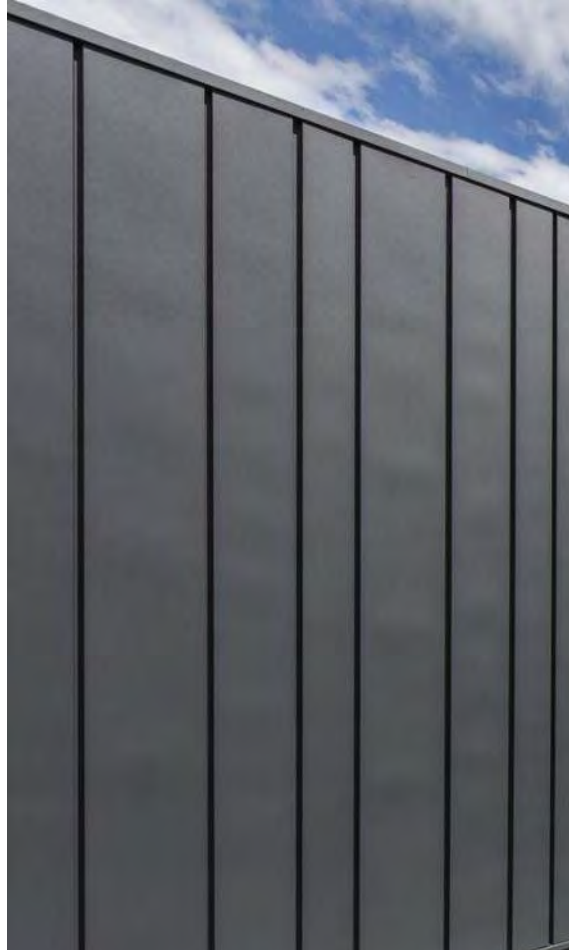
- For corner buildings:
 - Consider opening to exterior
 - Evaluate impact on Seattle Center
 - Consider material choices for "friendliness" if full programming access isn't possible.

- Concourse pavilion massing pushed to the corners of the site, engaging the public realm
- Concourse maximizes visual porosity to public plaza areas

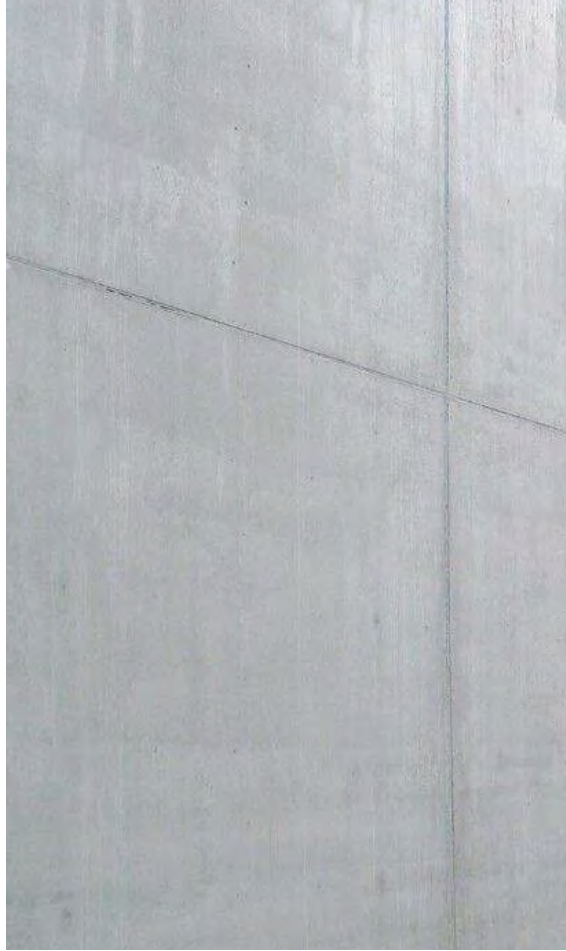
Exterior Materiality



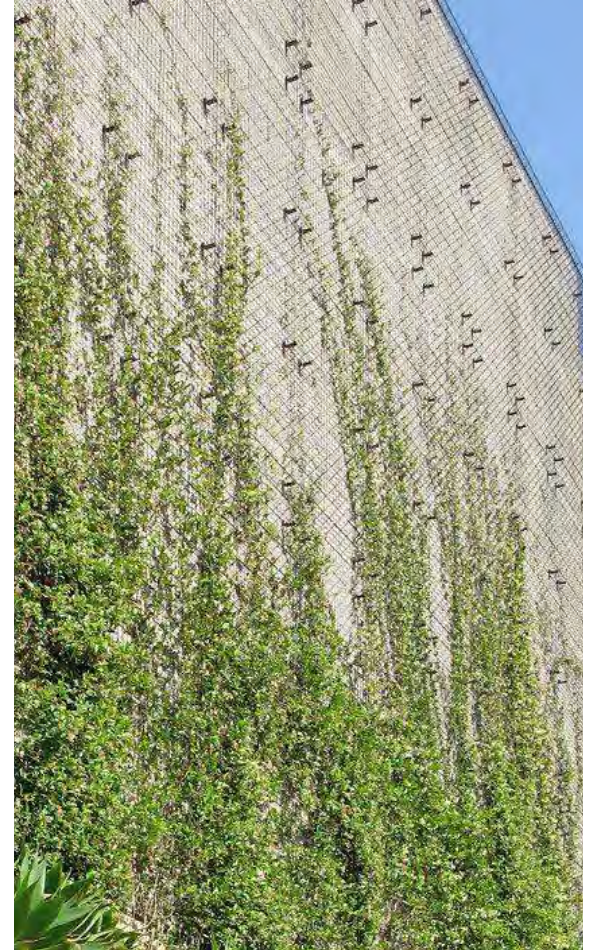
Knotwood Soffit Panels



Metal Wall Panels

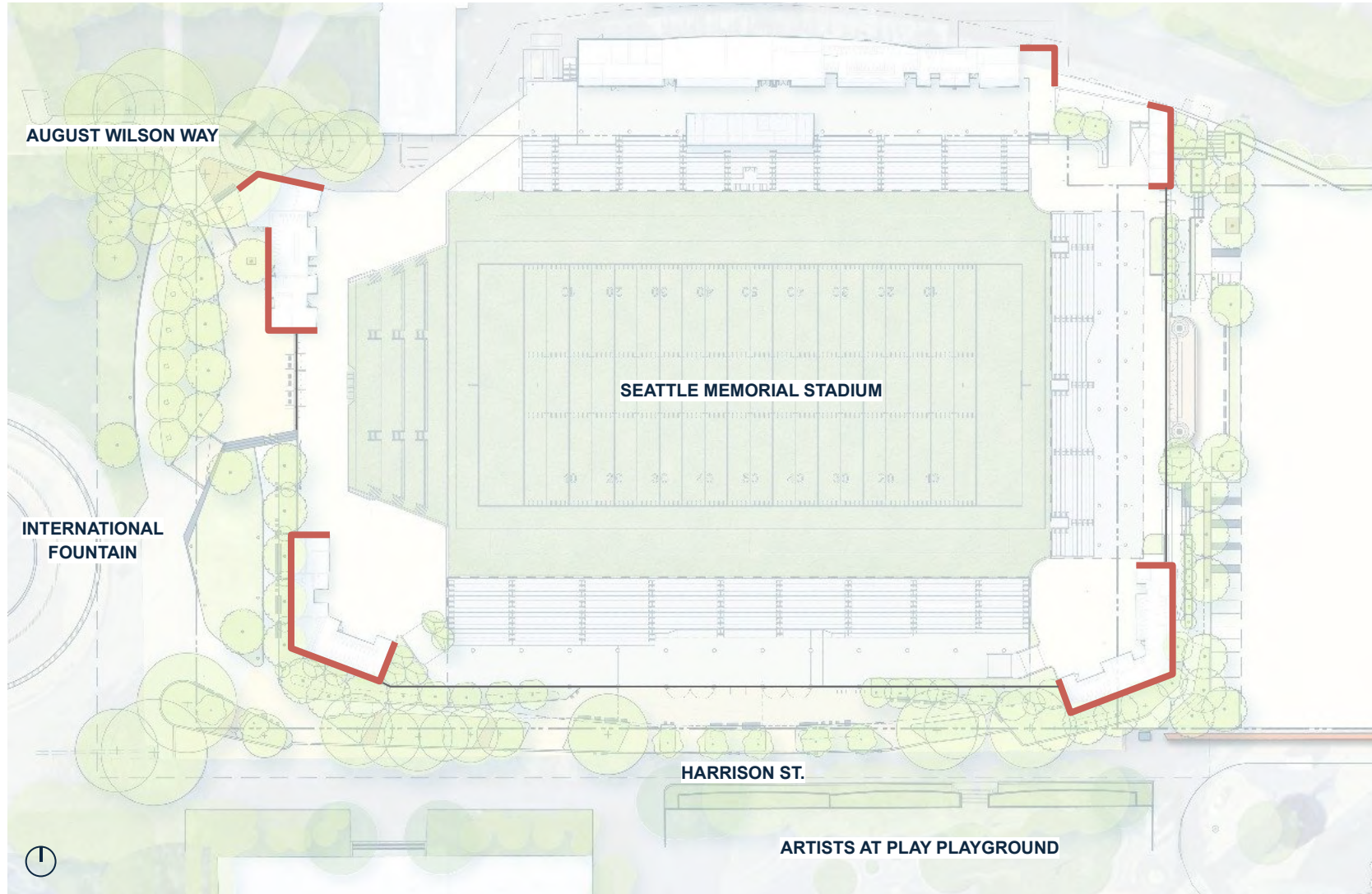


Precast Concrete Panels & Veneers



Tournesol Green Wall Systems

Corner Pavilion Exterior-Facing Materiality



— Custom Formliner
Precast Wall

Existing Precast on Site

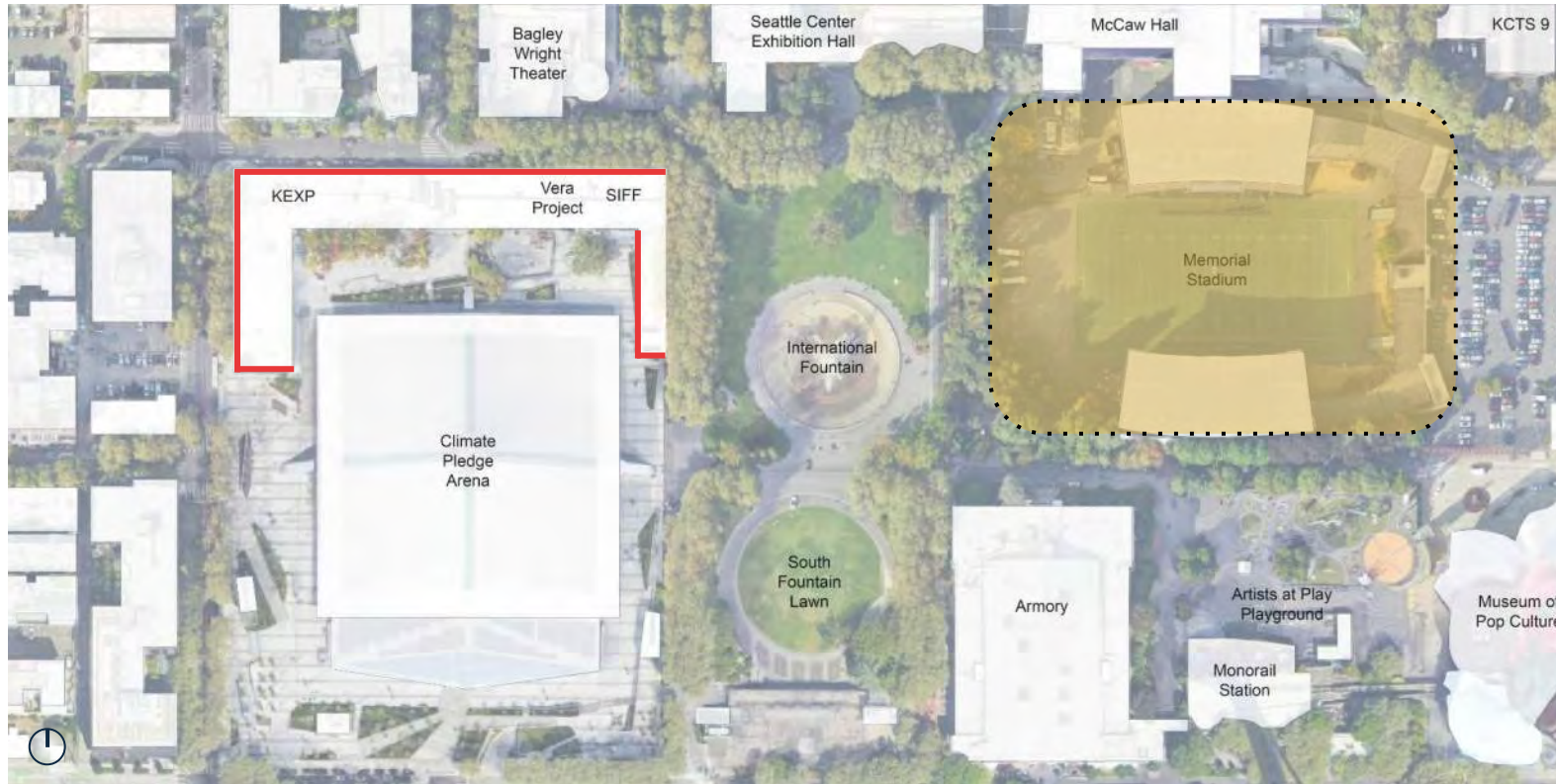


Looking North at Harrison St. and 1st Ave N.



Looking East at Republican St. and 1st Ave N.

Architectural Precast History

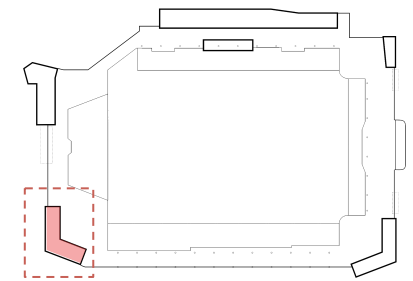
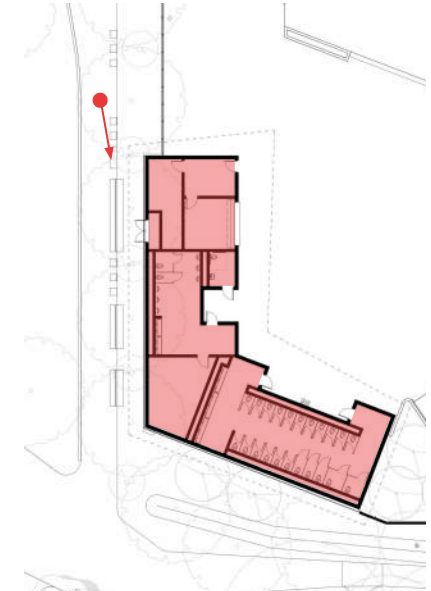


- Existing Architectural Precast Wall Panels
- Memorial Stadium Site

Site Plan

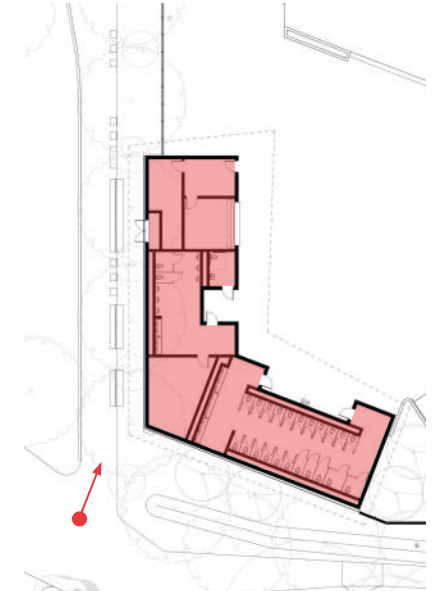
- Architectural artifacts from the Washington State Pavilion (Climate Pledge Arena) remain along the exterior facade of the complex
- Abstract modernist relief patterns date back to the 1962 World's Fair
- The Memorial Stadium Redevelopment team has taken inspiration from these expressive architectural precast concrete panels that utilize a simple cost effective material in an extraordinary way.

Southwest Building

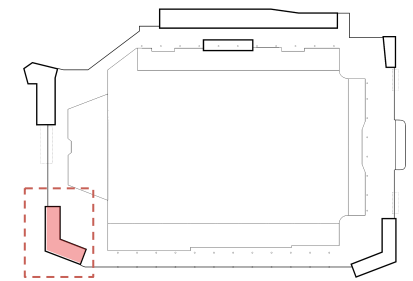


Representation Only - Subject to Change

Southwest Building

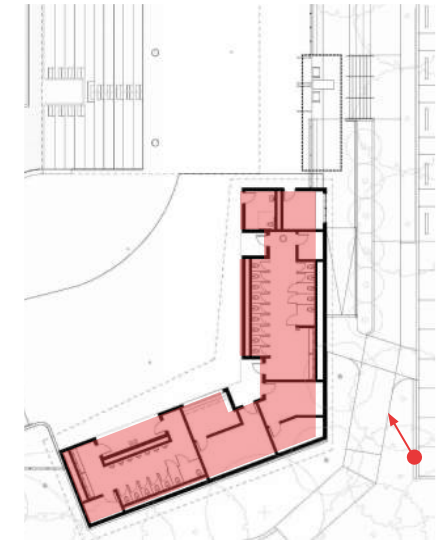
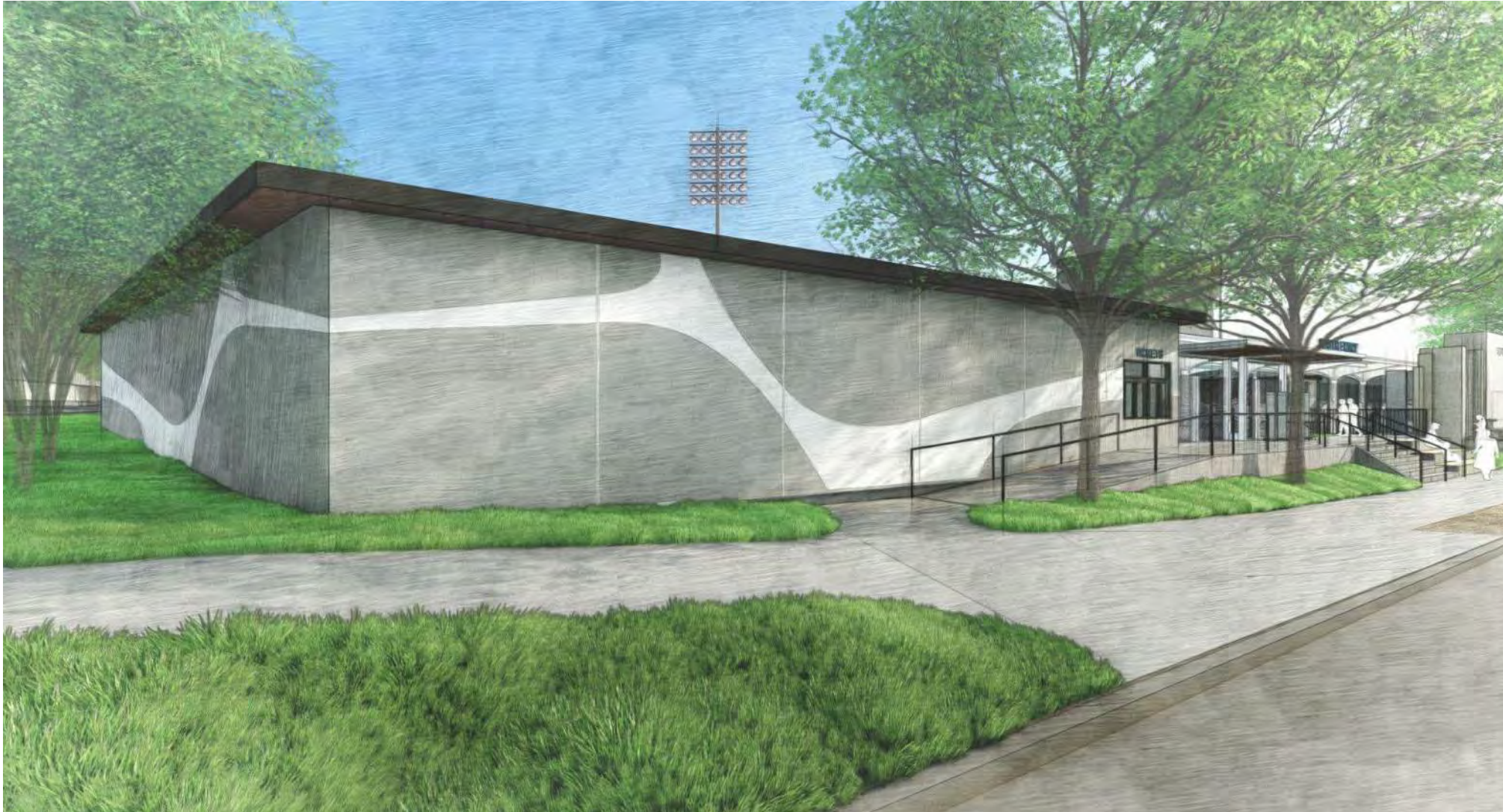


Enlarged Plan

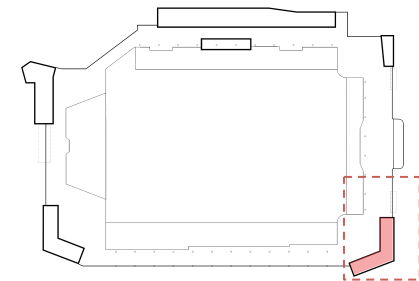


Key Plan

Southeast Building

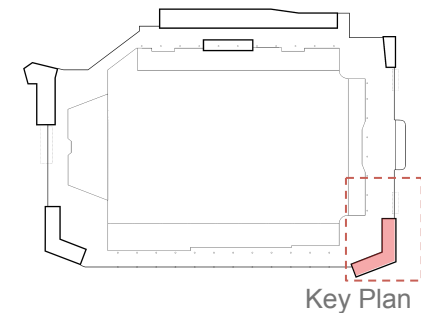
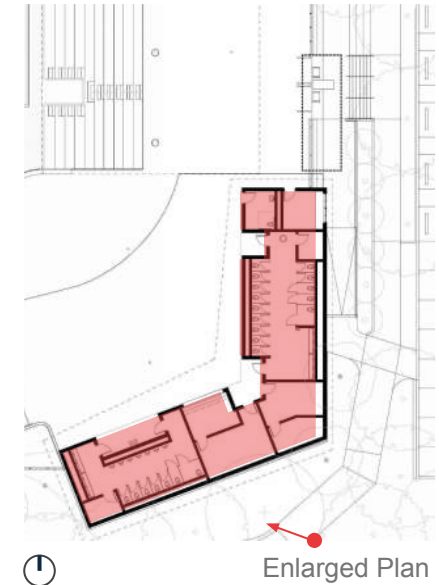


Enlarged Plan

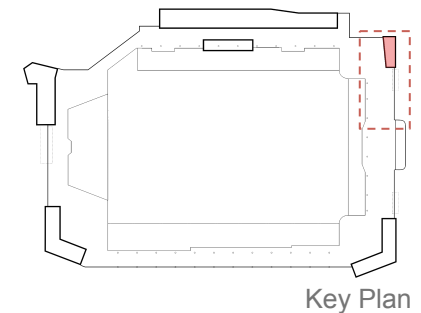
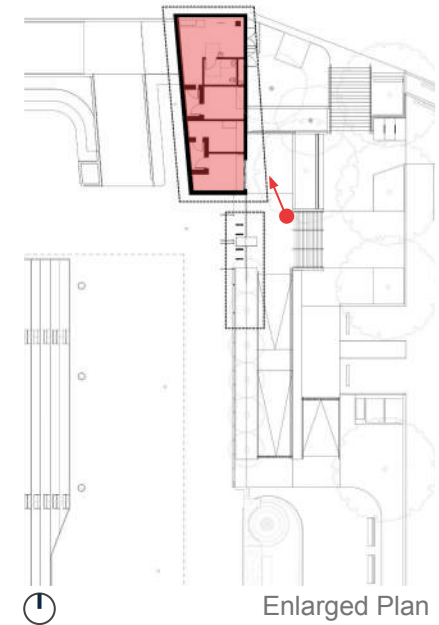


Key Plan

Southeast Building

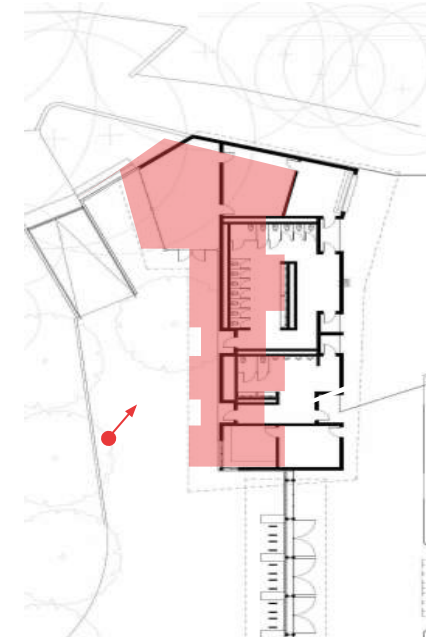


Northeast Building

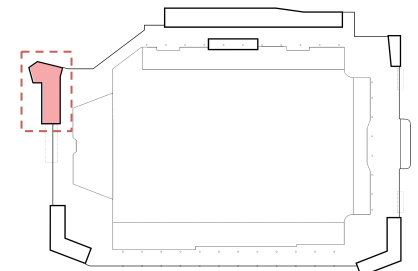


Representation Only - Subject to Change

Northwest Building

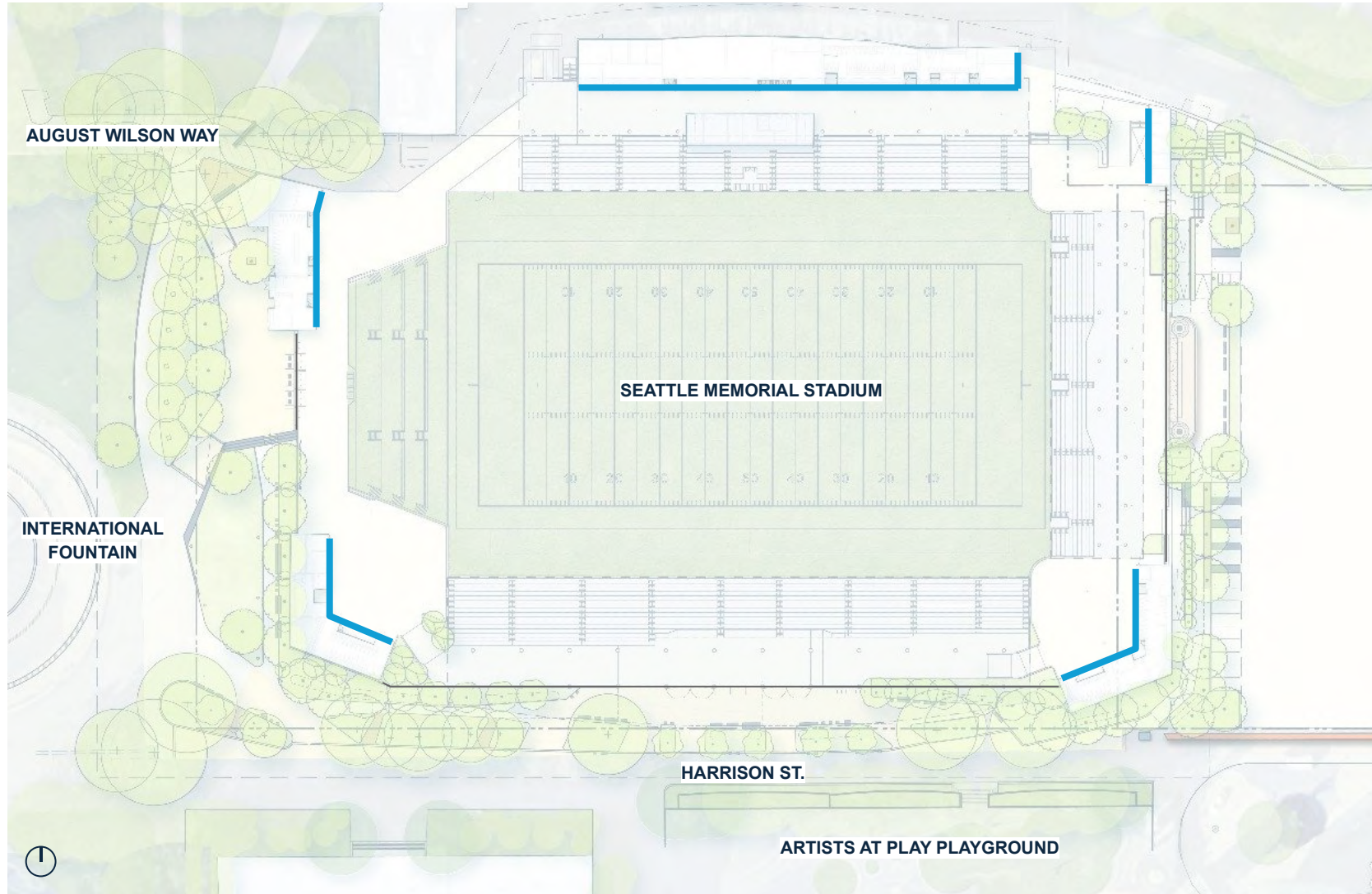


Enlarged Plan



Key Plan

Corner Pavilion Interior-Facing Materiality

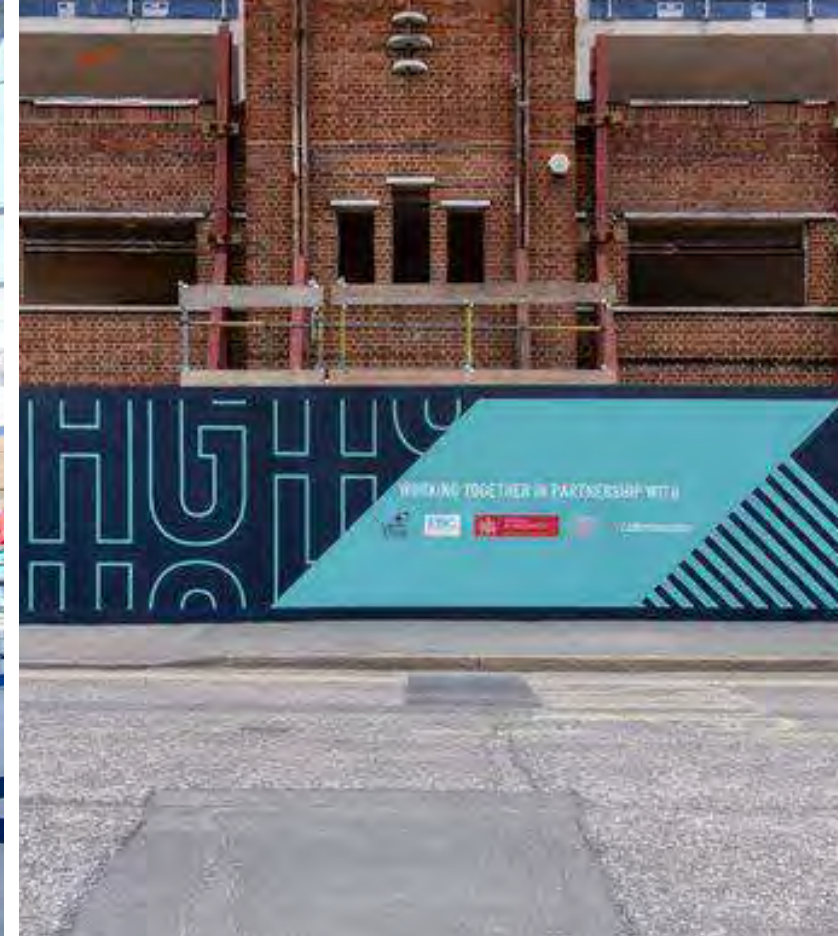


— Vinyl Art Wall on
Precast

Art Wall Precedents

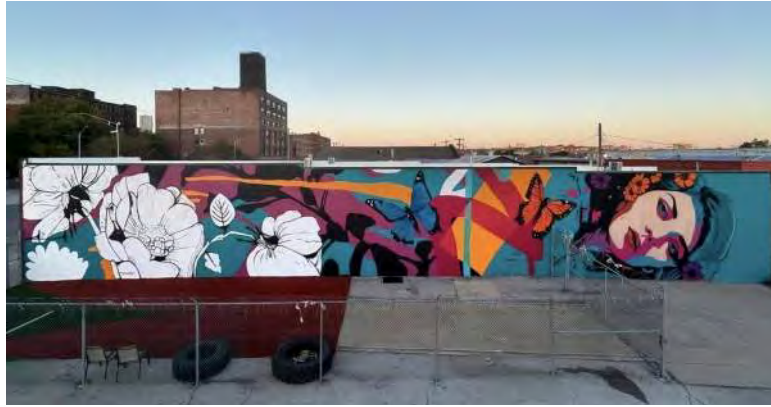


CPKC Stadium



Graphic Wall Wrap

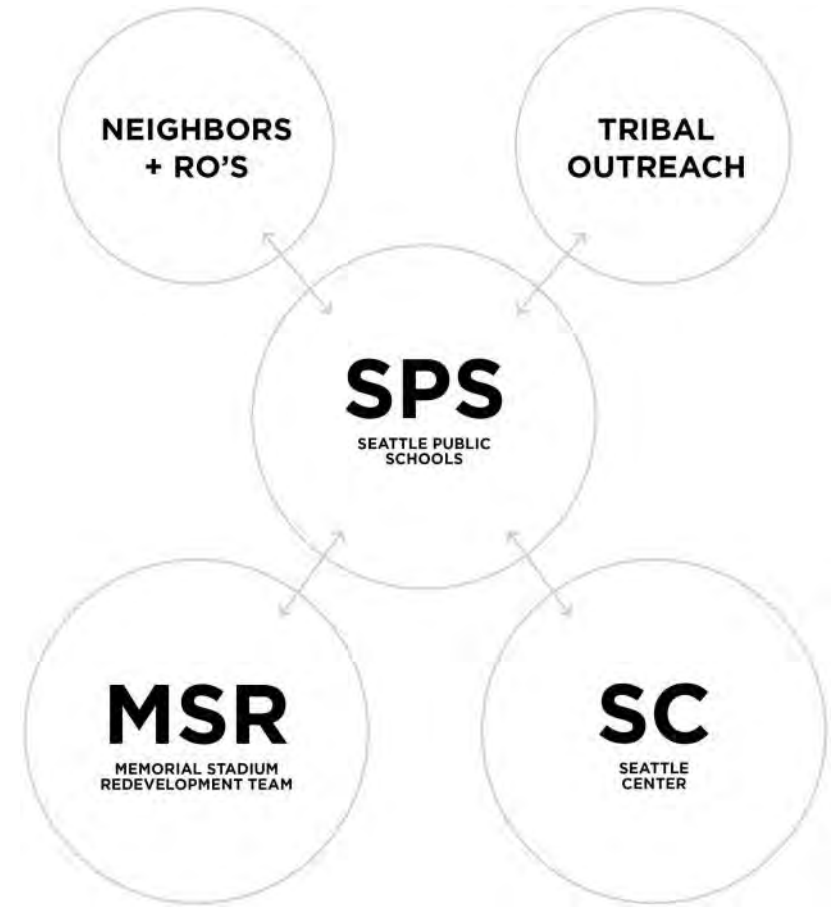
Art Wall Precedents



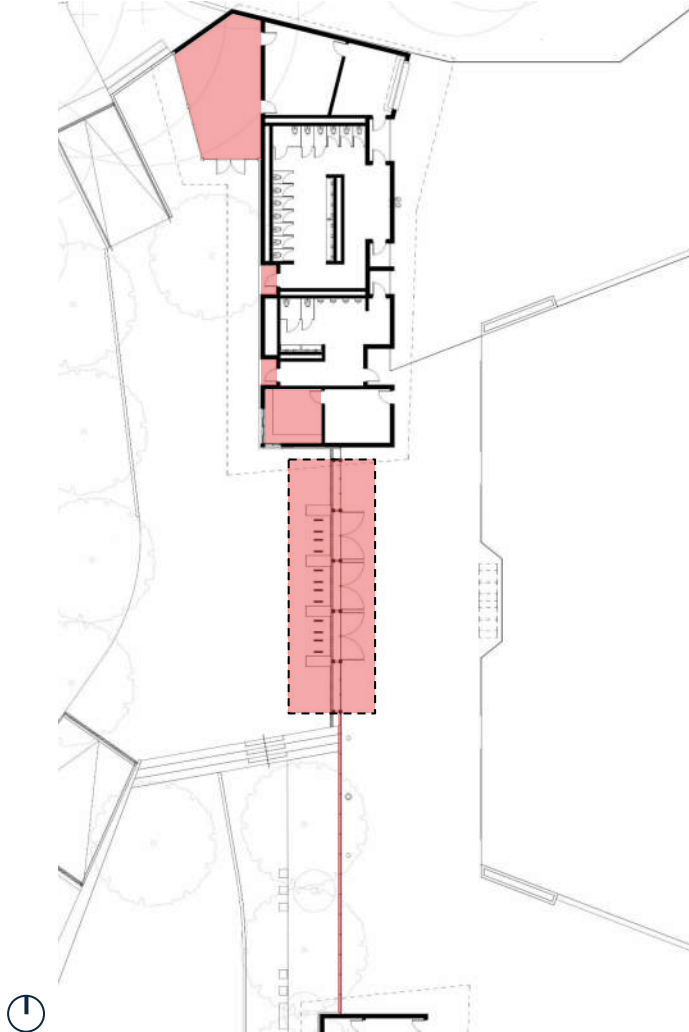
Art Wall Concept Study



Representation Only - Subject to Change

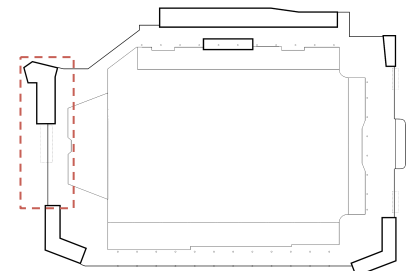


West Exterior Activations



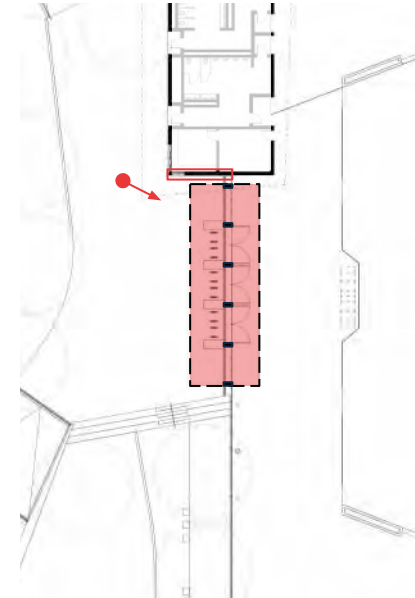
SDC recommendation from 10/17/24:

- For corner buildings:
 - Consider opening to exterior
 - Evaluate impact on Seattle Center
 - Consider material choices for "friendliness" if full programming access isn't possible.
- Evaluate feasibility of including public art infrastructure costs in project budget.
- Continue indigenous engagement

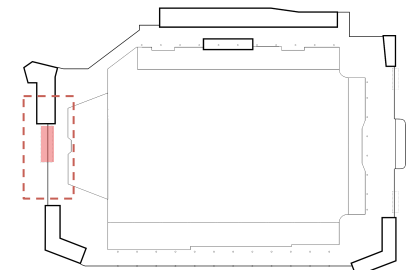


Key Plan

West Entry Gate - Donor Wall



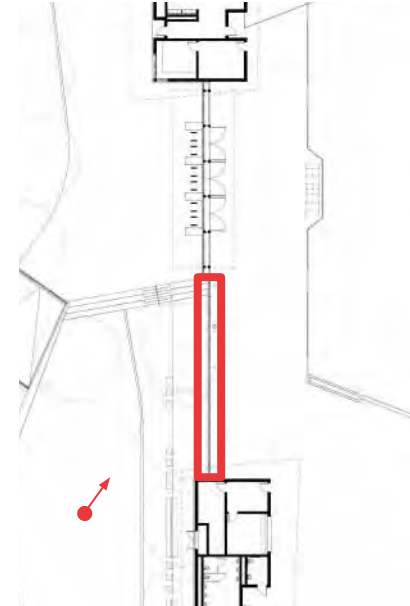
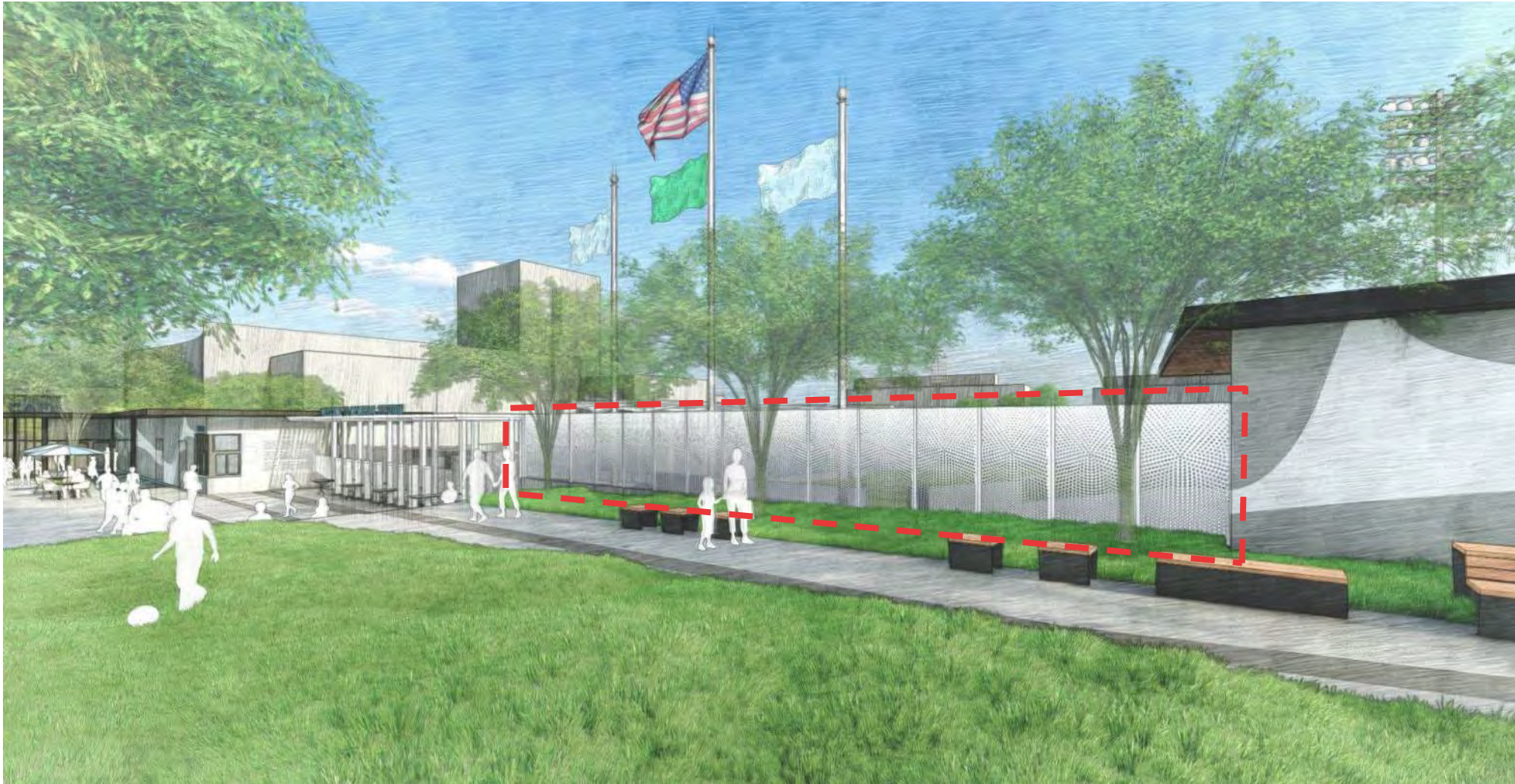
Enlarged Plan



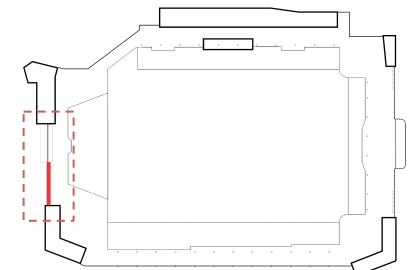
Key Plan

Custom West Fence

Art Opportunity



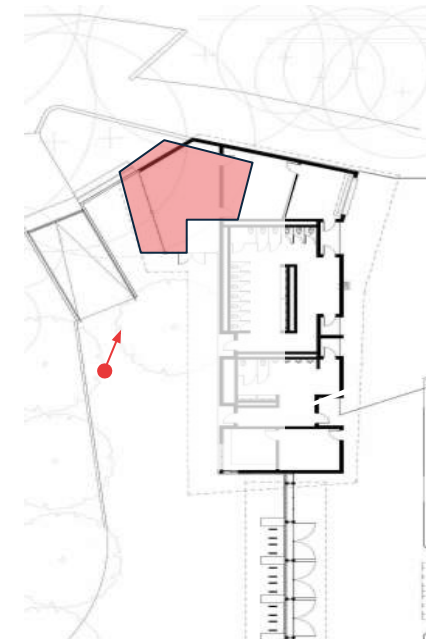
Enlarged Plan



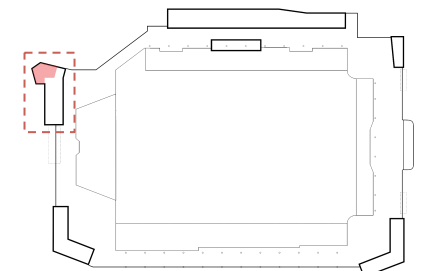
Key Plan

Representation Only - Subject to Change

Cafe - Exterior Activation

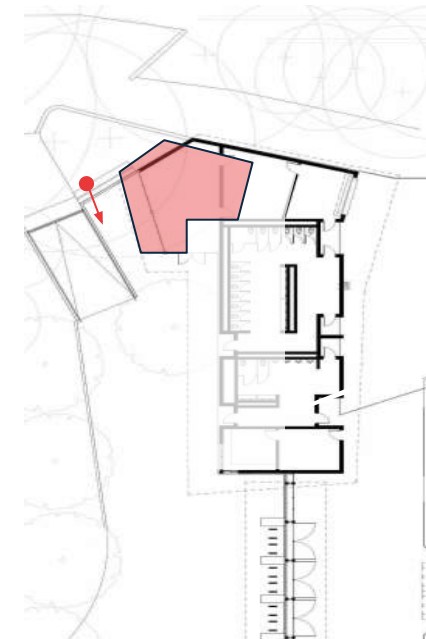


Enlarged Plan

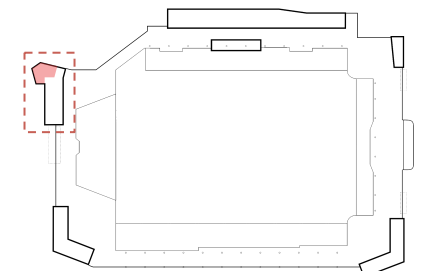


Key Plan

Cafe - Exterior Activation

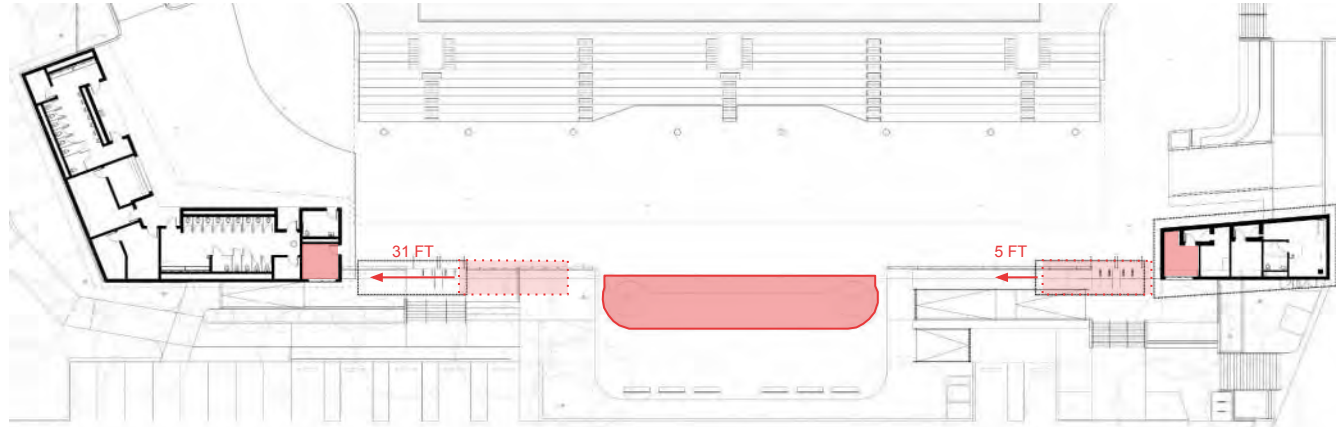


Enlarged Plan



Key Plan

East Exterior Activations

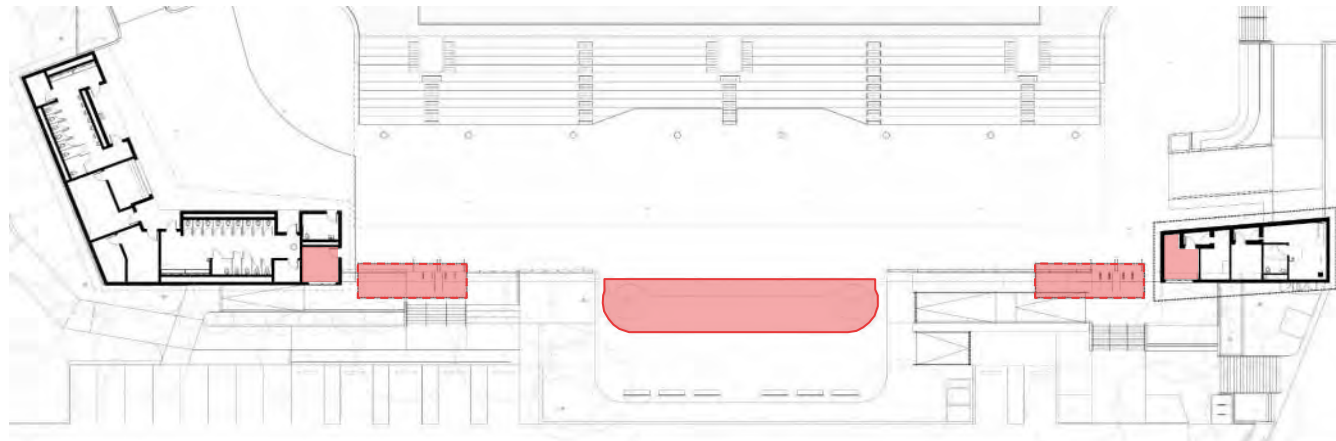


Previous Entry Gate Locations

SDC recommendation from 10/17/24:

For corner buildings:

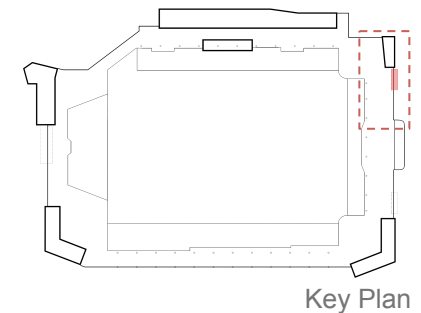
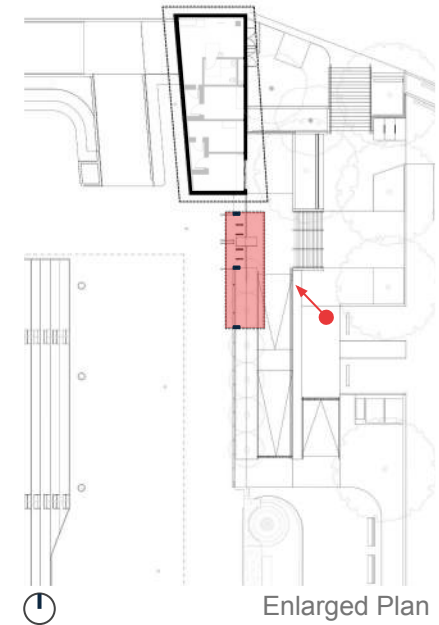
- Consider opening to exterior
- Evaluate impact on Seattle Center
- Consider material choices for "friendliness" if full programming access isn't possible.
- Evaluate feasibility of including public art infrastructure costs in project budget.
- Continue indigenous engagement



Current Entry Gate Locations

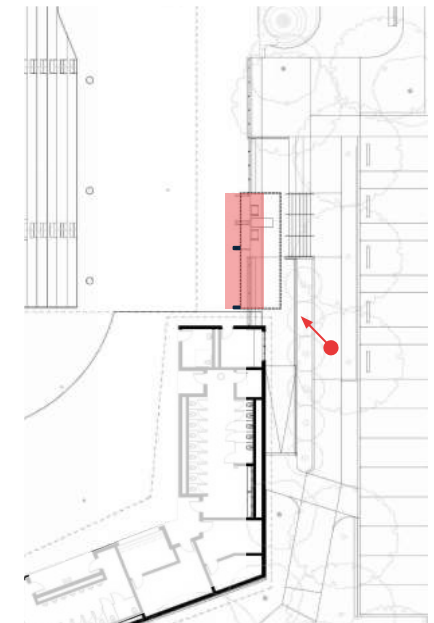
- East entry gates shifted to provide adequate distance from both the memorial wall and adjacent corner pavilions
- Integrated Fountains at memorial wall to be restored and reactivated

Northeast Entry Gate

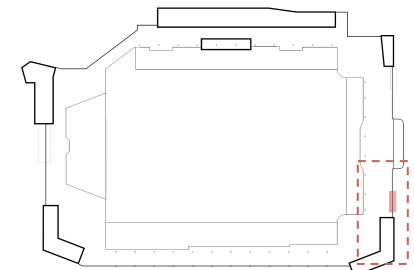


Representation Only - Subject to Change

Southeast Entry Gate



Enlarged Plan

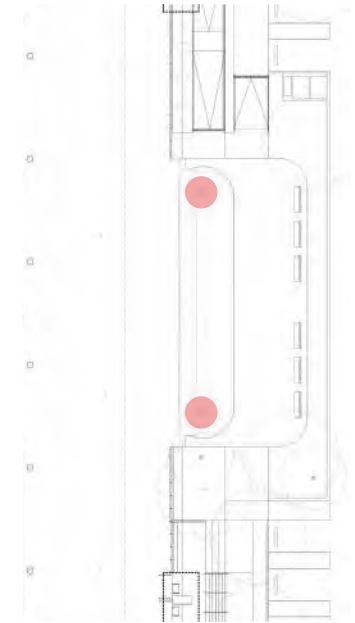


Key Plan

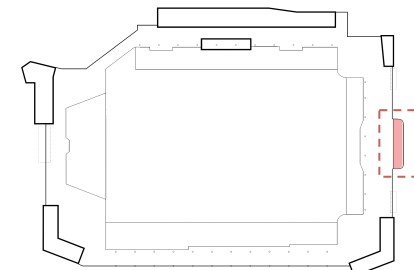
Restored Memorial Fountains



Placeholder: Use High Resolution Image

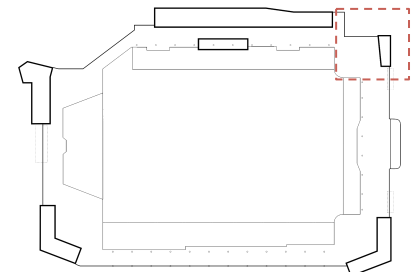
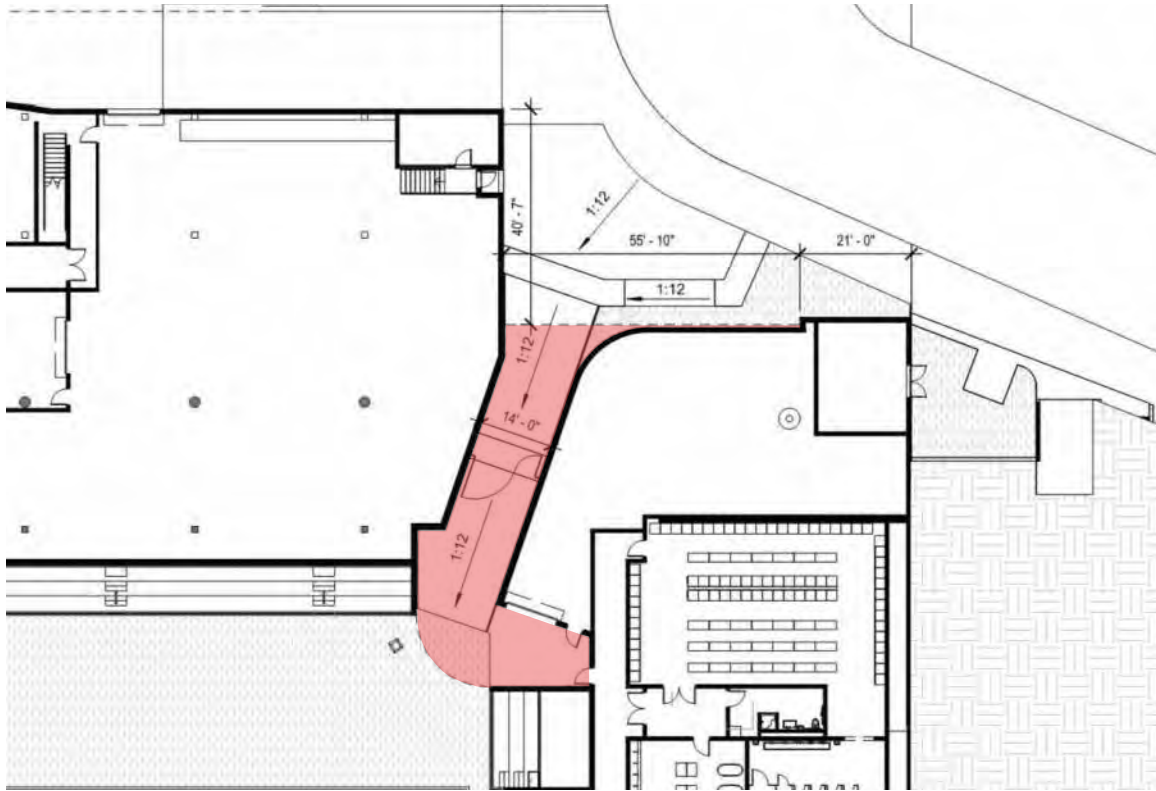


Enlarged Plan



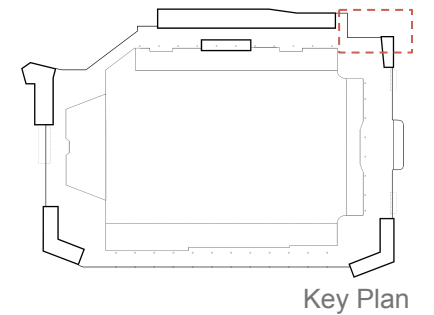
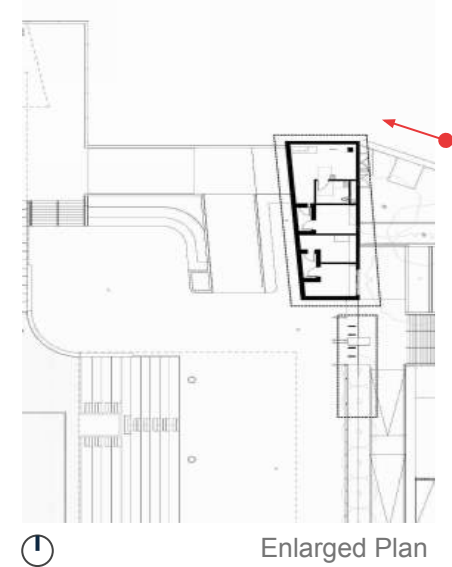
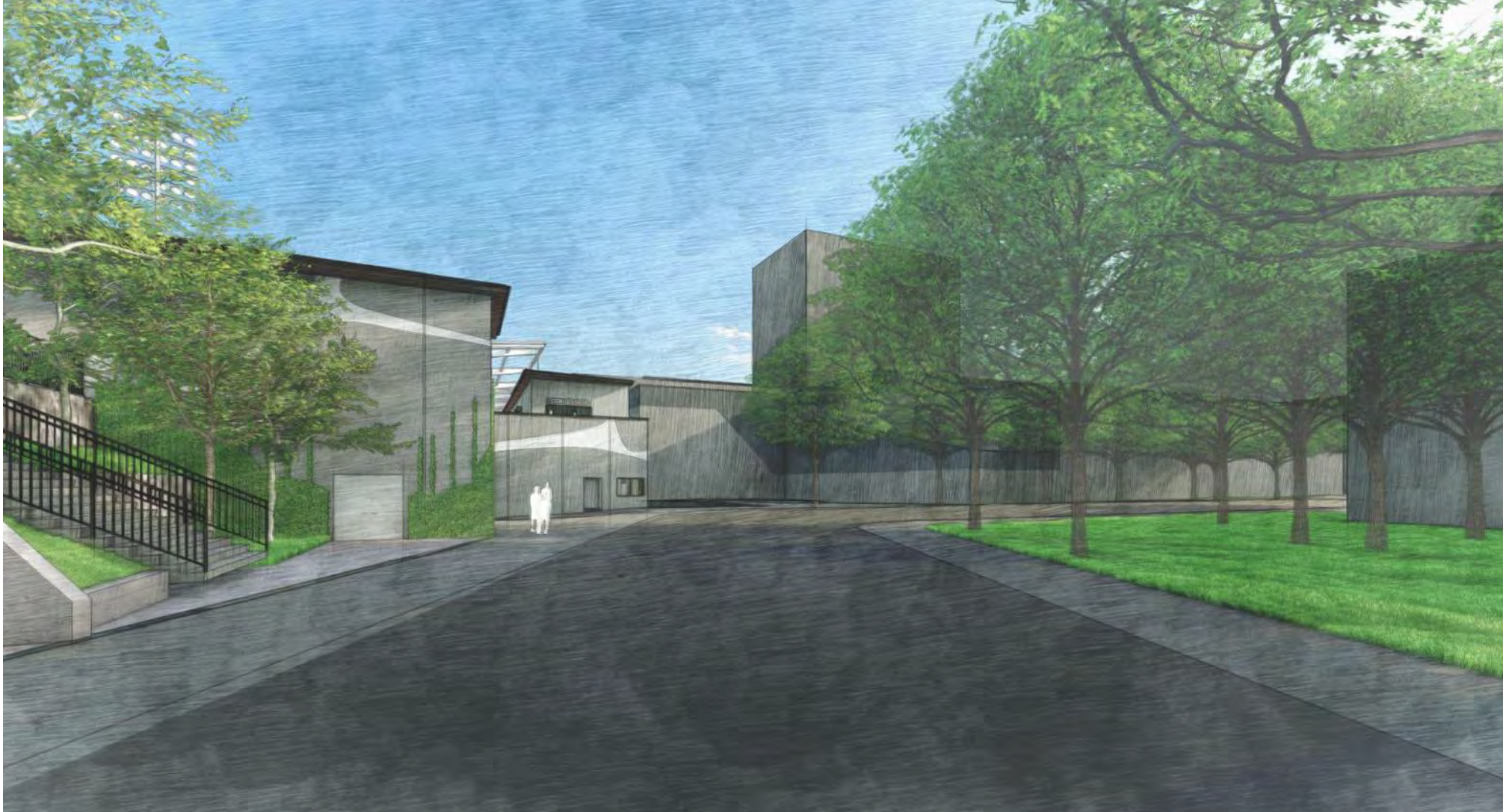
Key Plan

Northeast Field Entry Tunnel

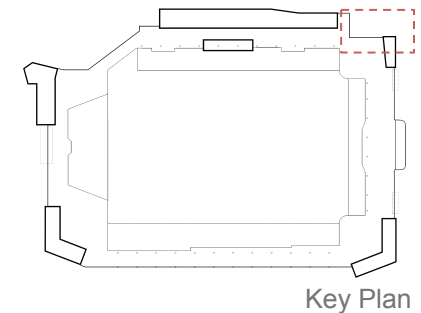
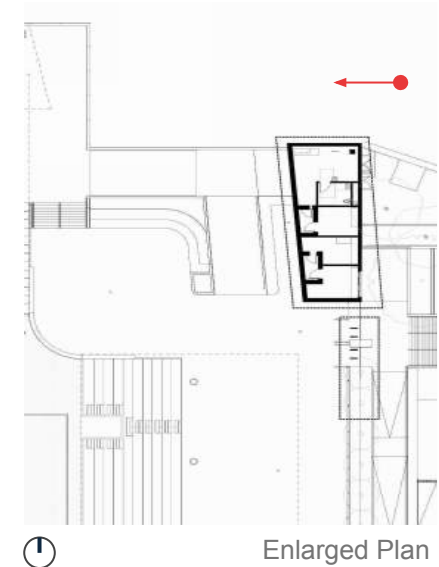


Key Plan

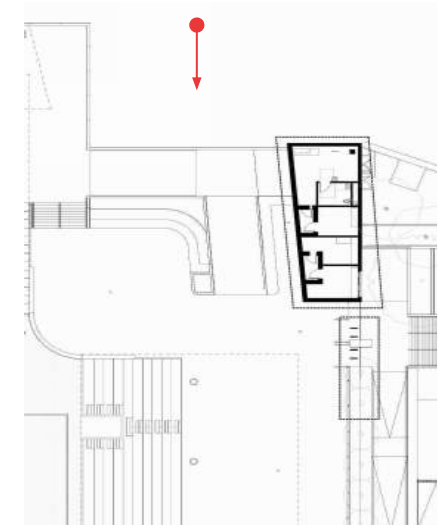
Northeast Field Entry Tunnel



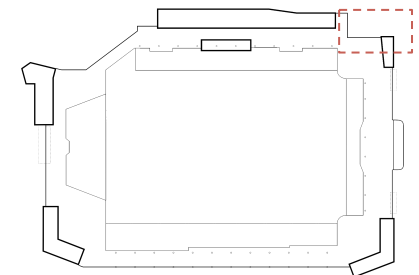
Northeast Field Entry Tunnel



Northeast Field Entry Tunnel

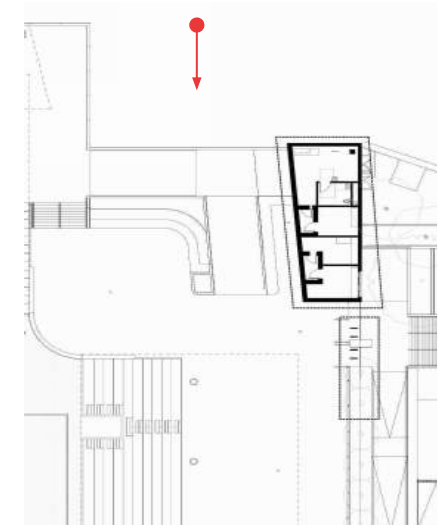


Enlarged Plan

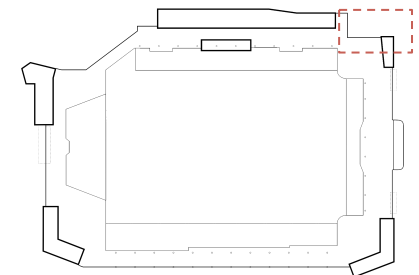


Key Plan

Northeast Field Entry Tunnel

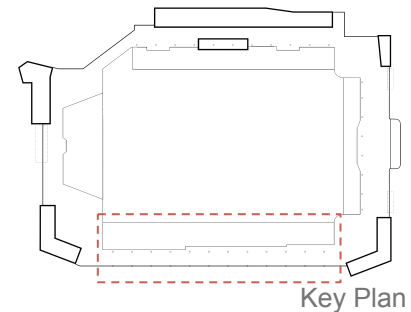
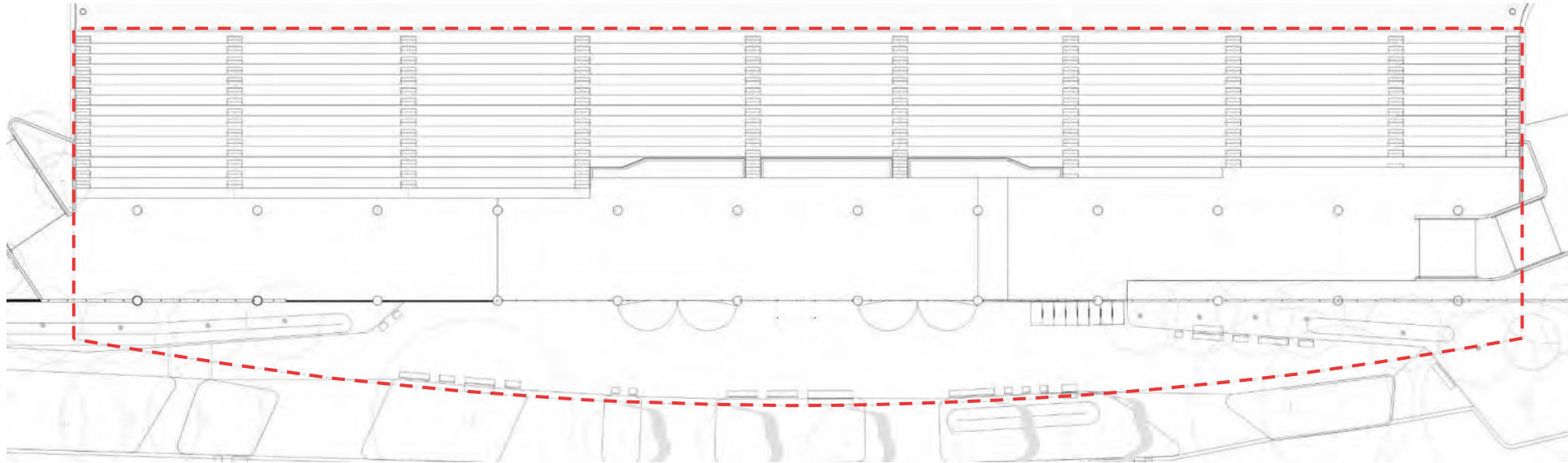


Enlarged Plan

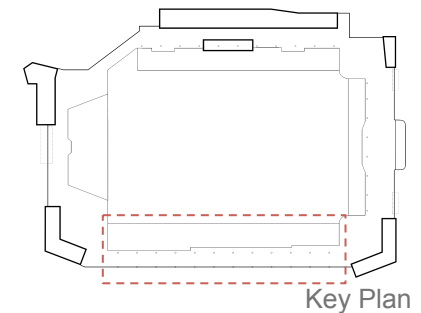


Key Plan

Harrison St. Feature Canopy Activation



Harrison St. Feature Canopy Activation




An aerial night view of the Seattle skyline, featuring the Space Needle and various city buildings. The word "Sustainability" is overlaid in large white text, flanked by two horizontal red lines.

Sustainability



Sustainability Update

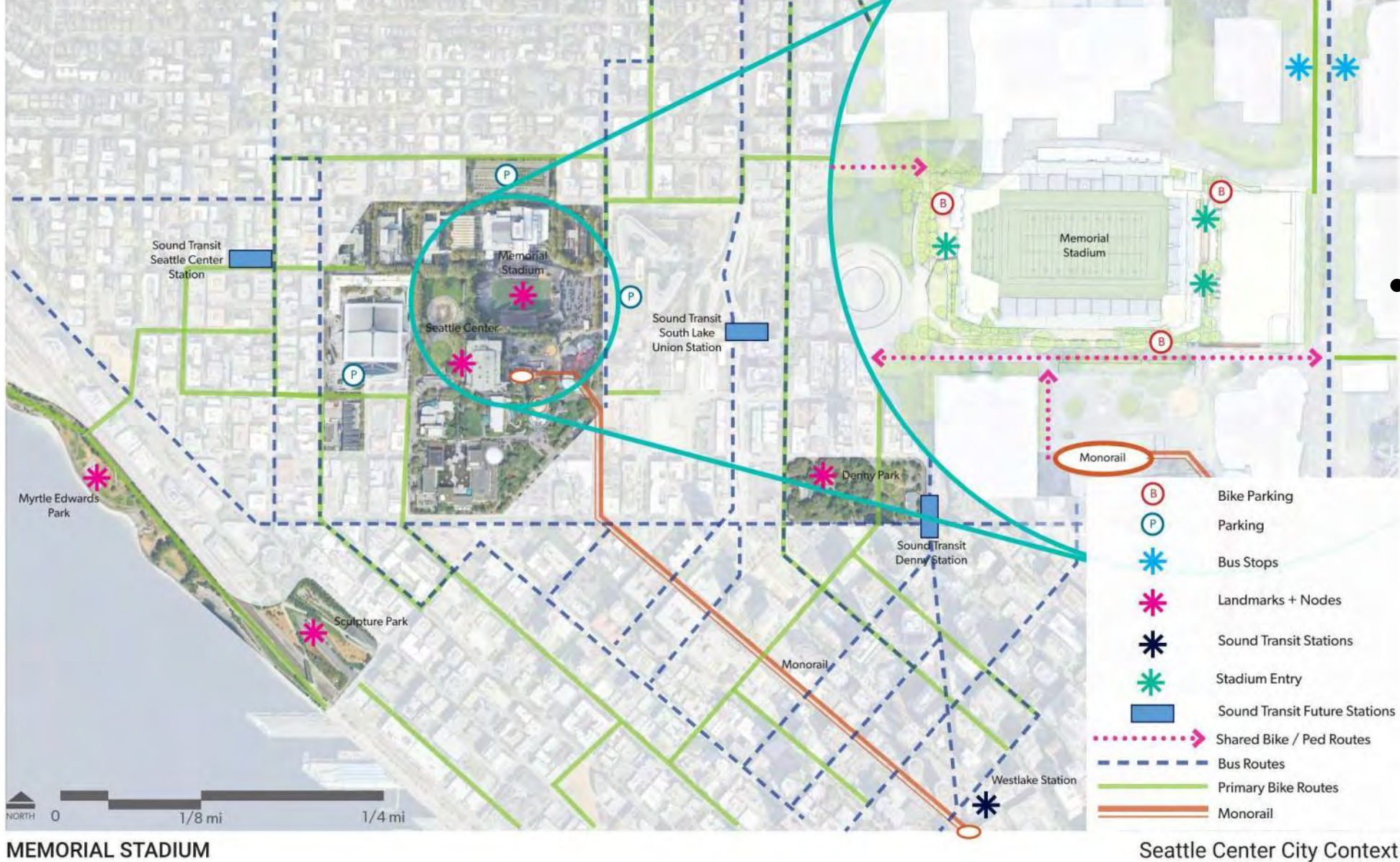
- 2021 Seattle Energy Code:
 - Fault Detection and Diagnostics
 - Reduced Lighting Power
 - Renewable Energy
 - Enhanced Envelope Performance
- LEED Silver:

An aerial night view of Seattle, Washington, featuring the Space Needle and the city skyline. The image is dark with city lights visible. Two horizontal red lines are positioned above and below the text.

Site Program / Design



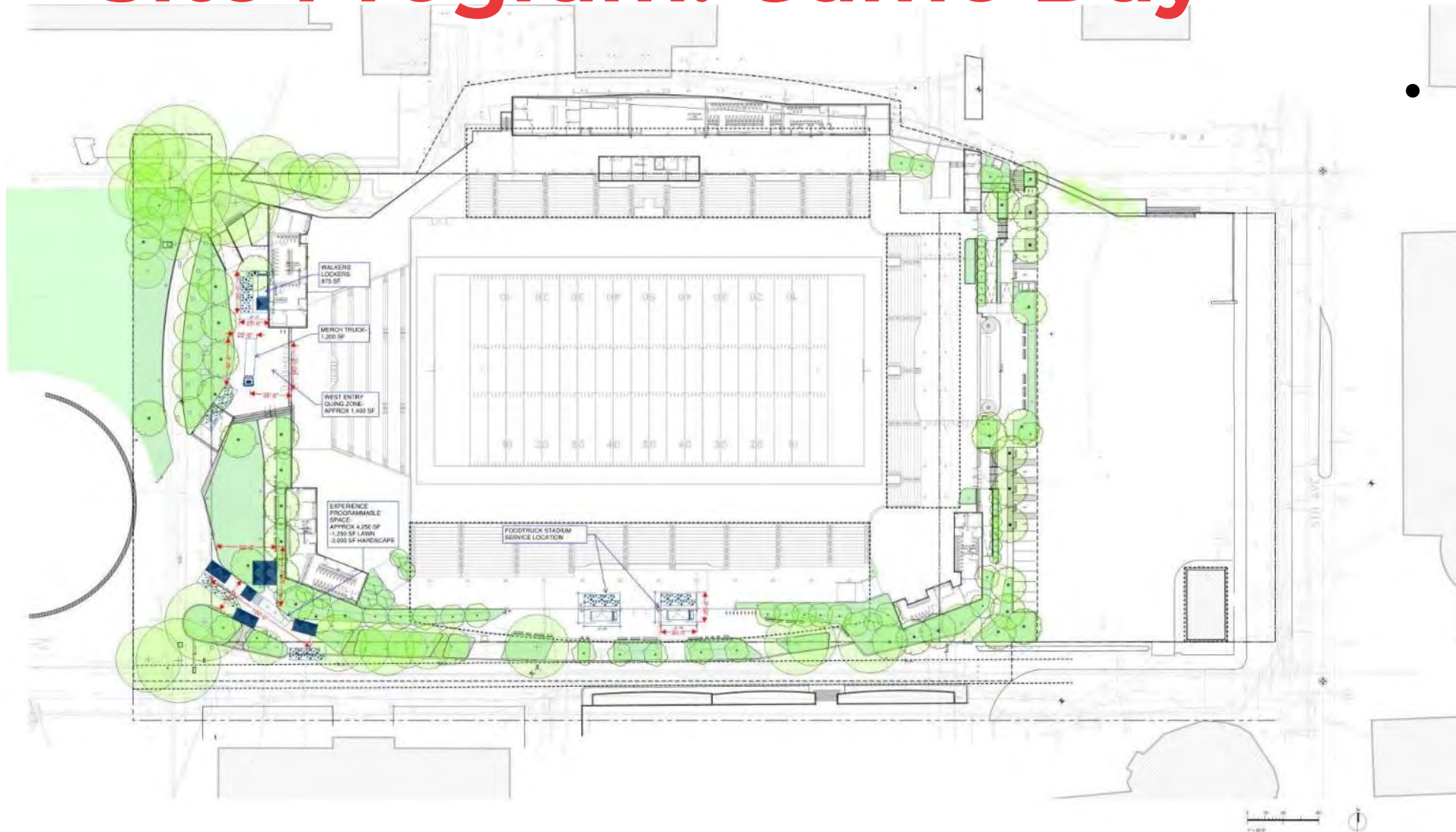
Site Extent



- On campus pathways are mixed use and range in size from 20 to 48 feet for access to Monorail and on Harrison

Transportation / Access

Site Program: Game Day



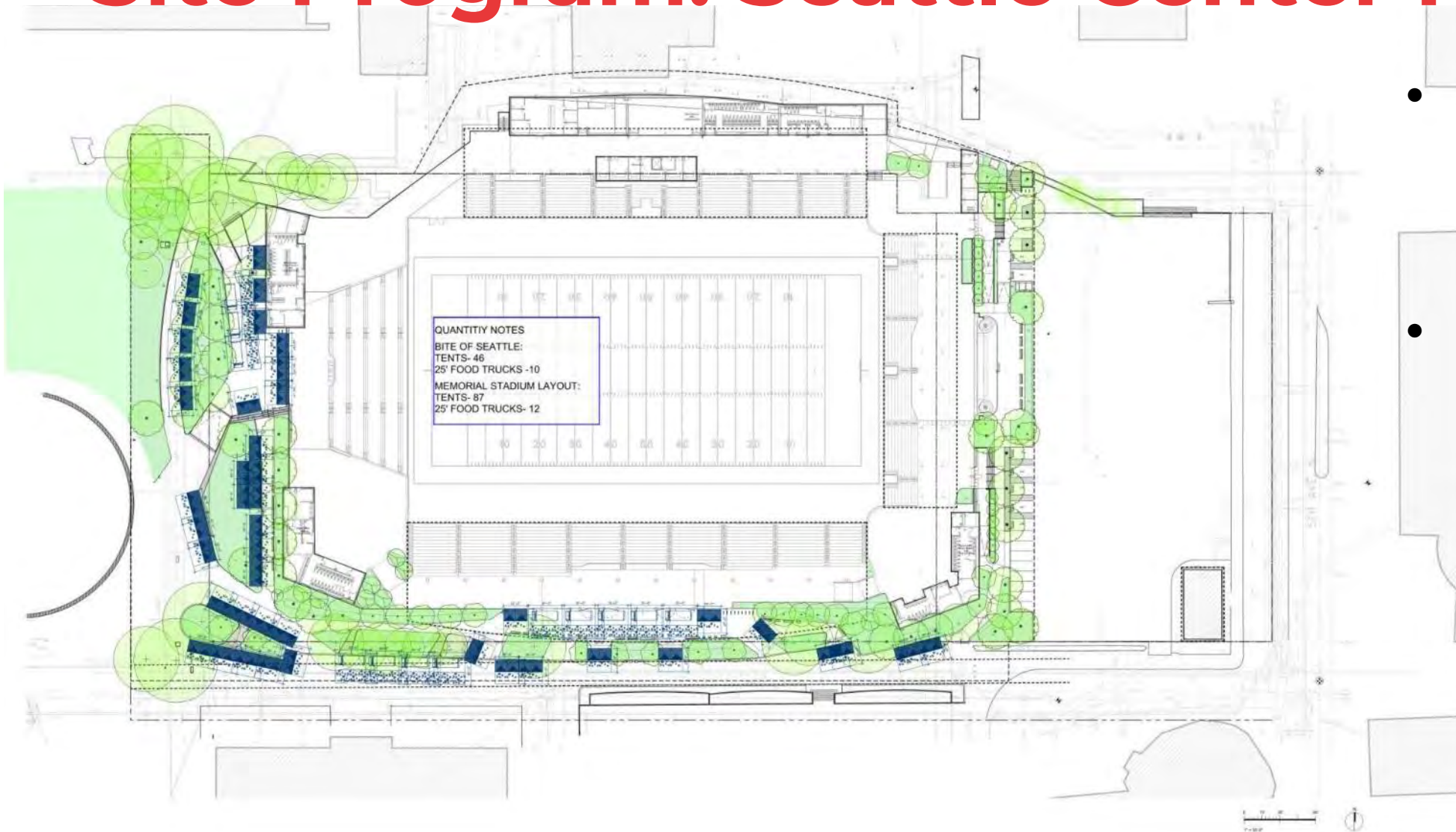
- Game day site test for:
 - Entry quing (if west entry used)
 - Walker locker staging
 - Programmable experience space
 - Food truck at stadium gate

Site Program: School Events



- School event site test for:
 - Outdoor classroom with potential controlled access for groups ranging from 10 to 20 students.
 - Small performance stage with seating for 160
 - Field game space for 80 people

Site Program: Seattle Center Festival



- Festival program site test. Quantity includes:
 - 87 tents
 - 12 food trucks
- Reference - Bite of Seattle program quantity:
 - 46 tents
 - 10 food trucks
 -

Site Program: Large Events



BEER GARDEN



EVENT STAGING

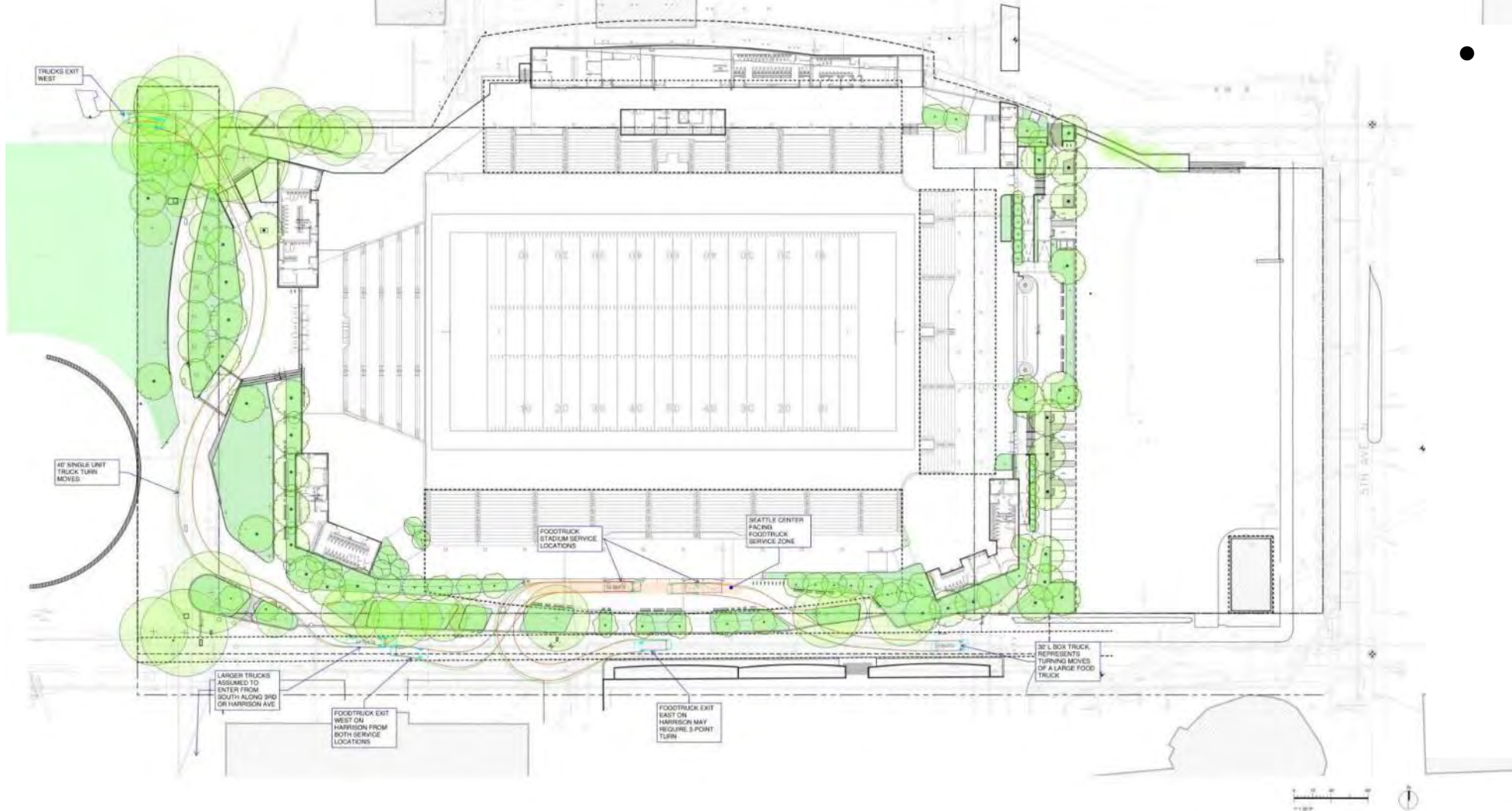
- Large event site test for:
 - Beer Garden with seating for 300 in 12,000SF
 - Event with stage and seating for 250

Site Program: Private Events



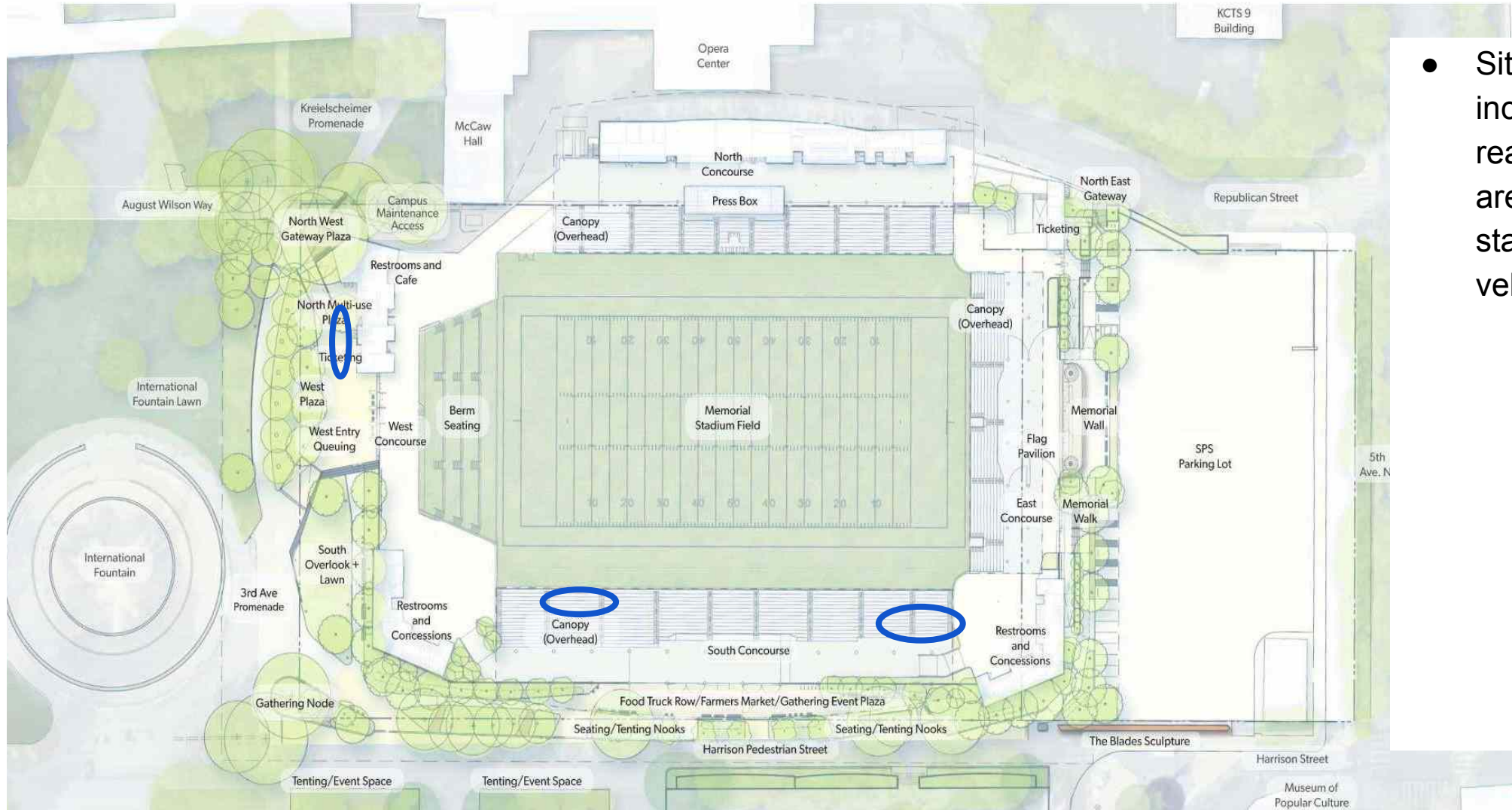
- Private event site test:
 - Event with 30 person dance floor and seating for 100
 - Fitness space for 60 to 100 people
 - Temporary sport courts for 2 pickleball or ½ basketball
 - Walk thru experience programmable space of approx 6,500 SF

Site Program: Vehicle Access



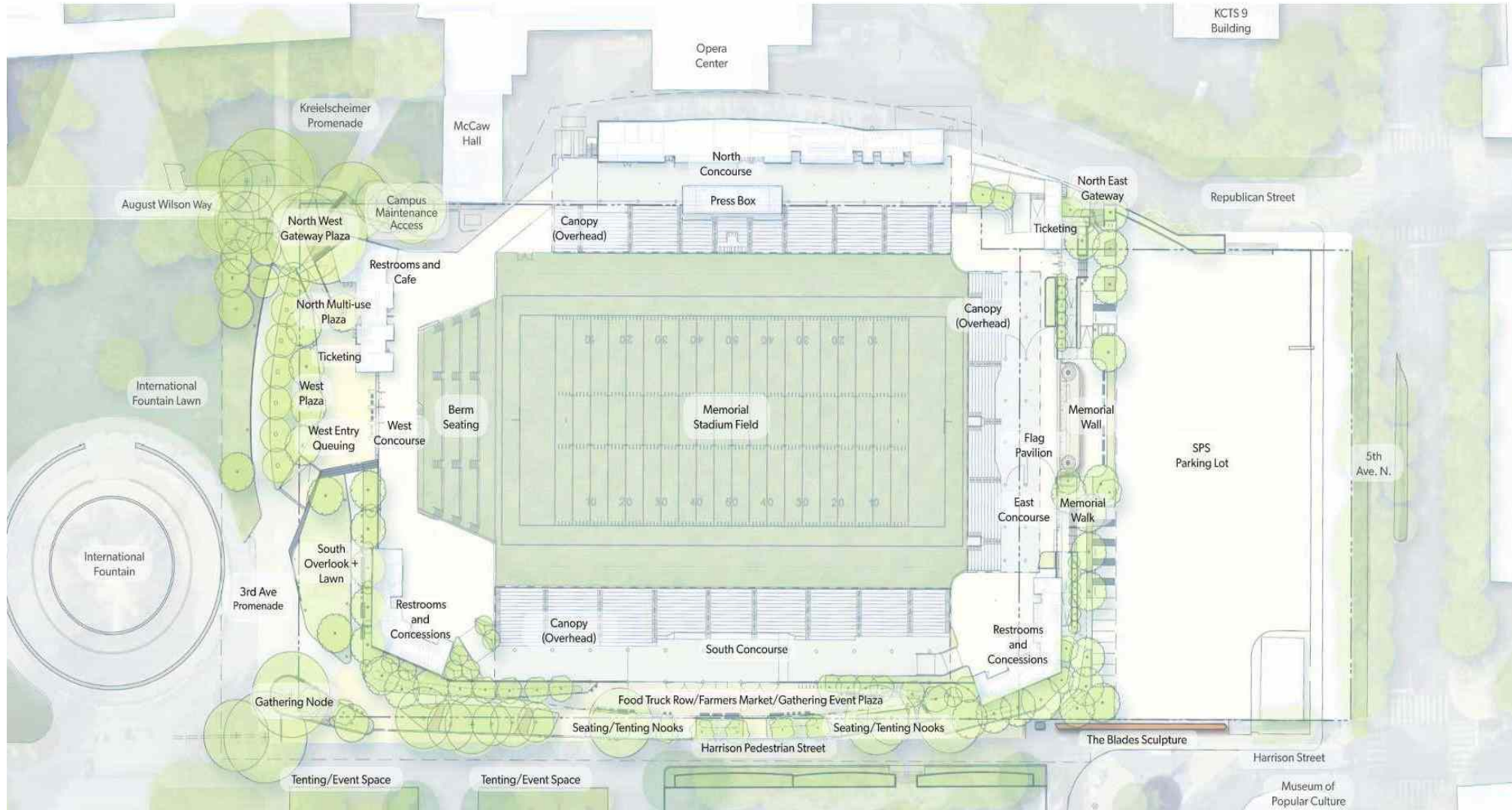
- Vehicle movement site test:
 - 25 foot food trucks
 - 30 foot box truck
 - 40 foot single unit truck

Site Program: Site Plan Alterations

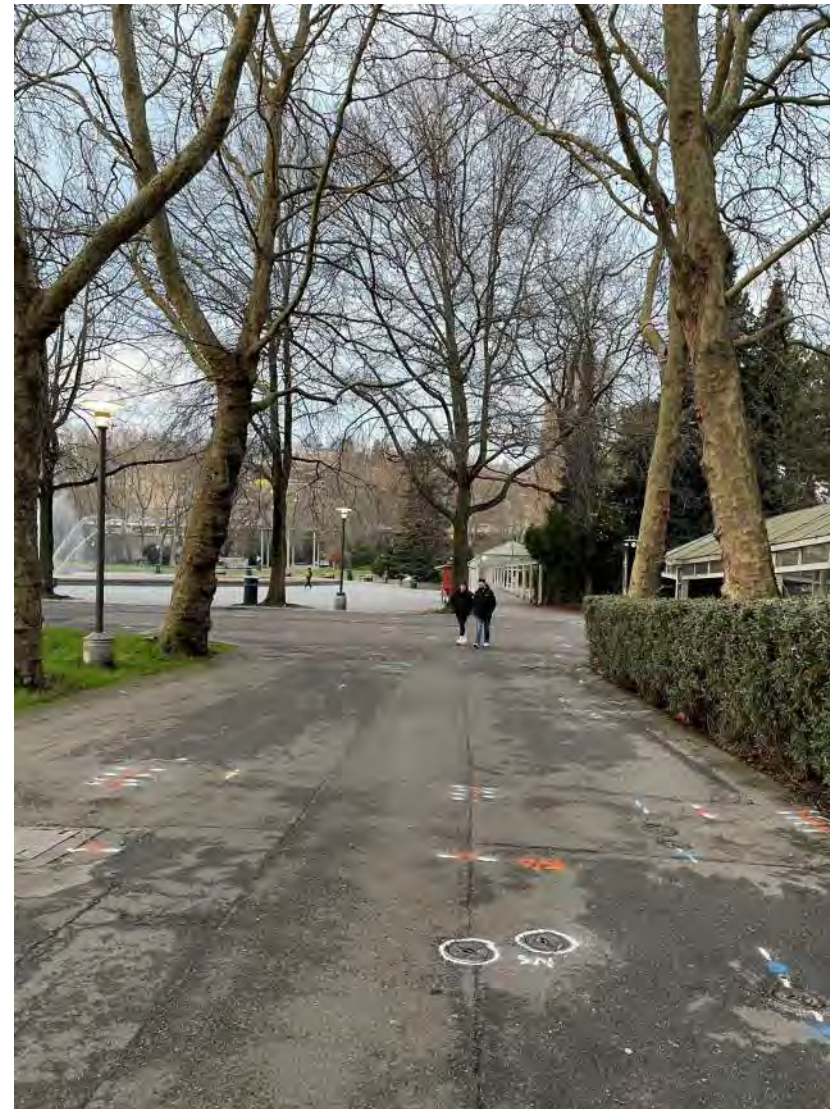


- Site program alterations include minor realignment of planting areas to increase event staging and ease of vehicular access.

Site Plan



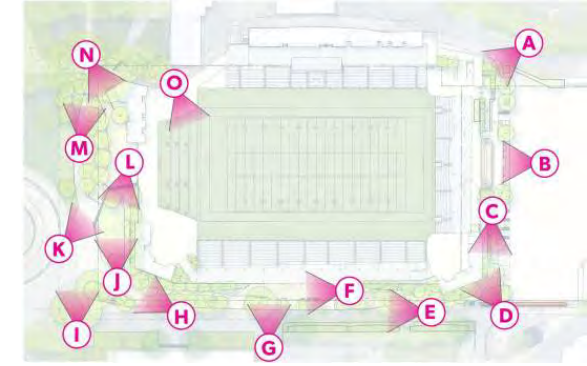
Third Ave. Promenade



Third Ave. Promenade



Third Ave. Promenade

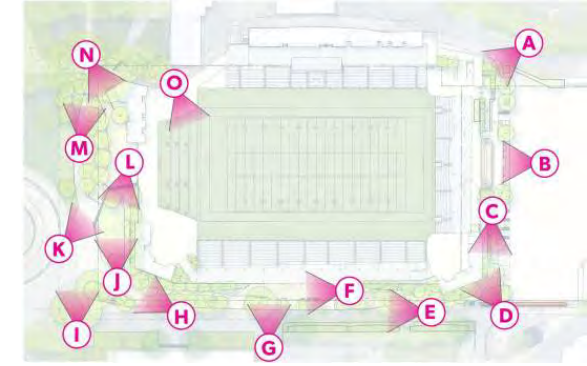


Existing: 3rd Avenue Promenade Looking North



Proposed: 3rd Avenue Promenade Looking North

Third Ave. Promenade

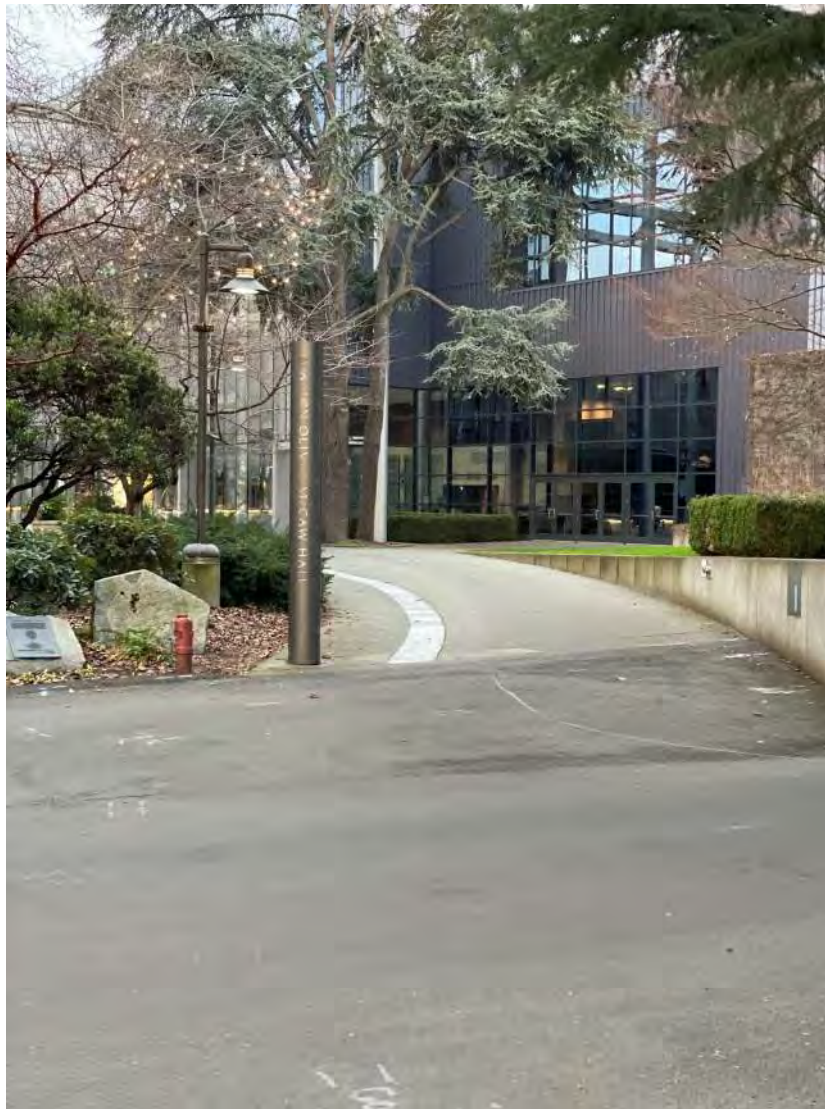
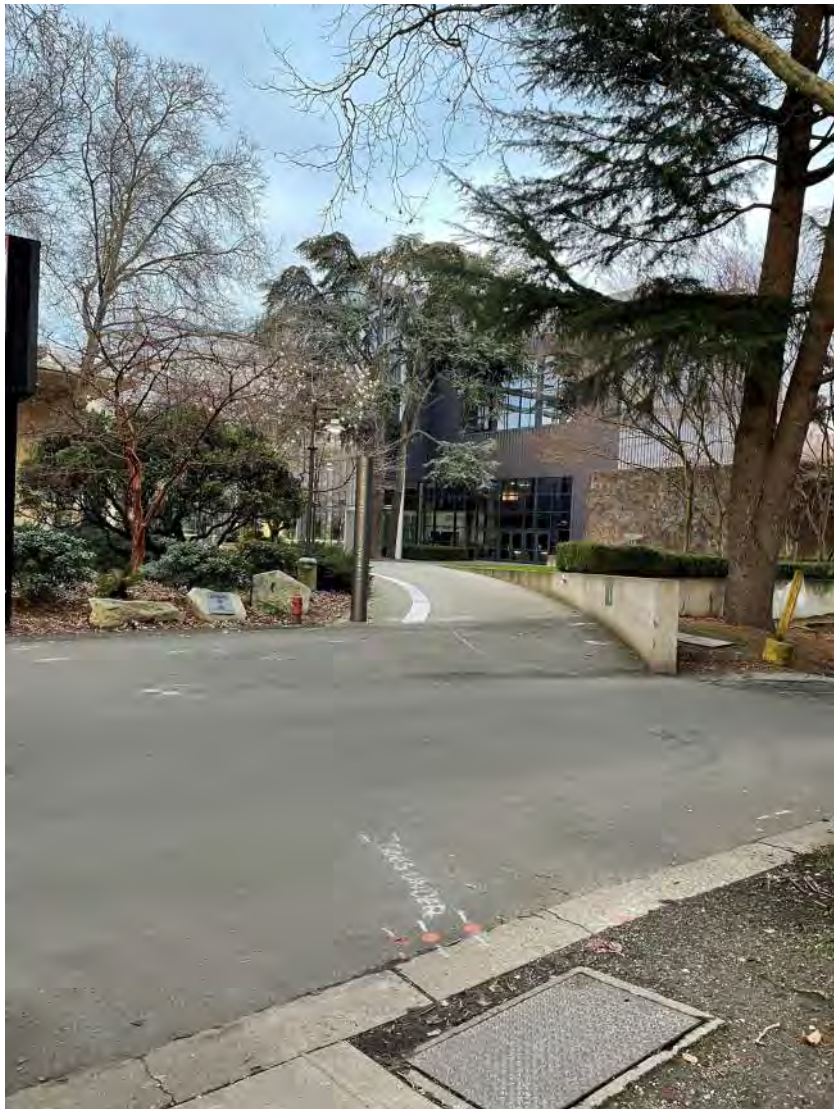


Existing: 3rd Avenue Promenade Looking North

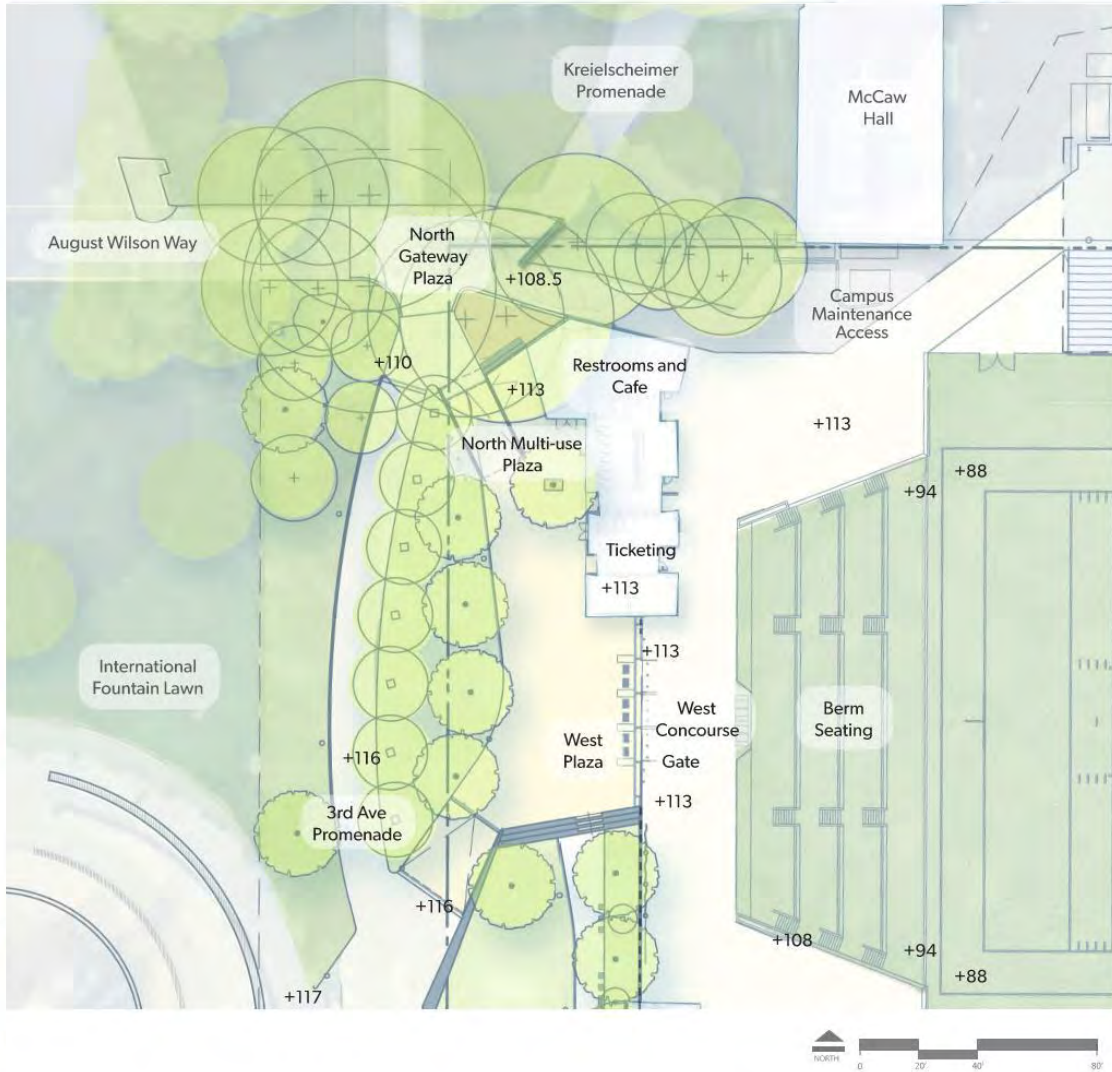


Proposed: 3rd Avenue Promenade Looking North

Third Ave. Promenade



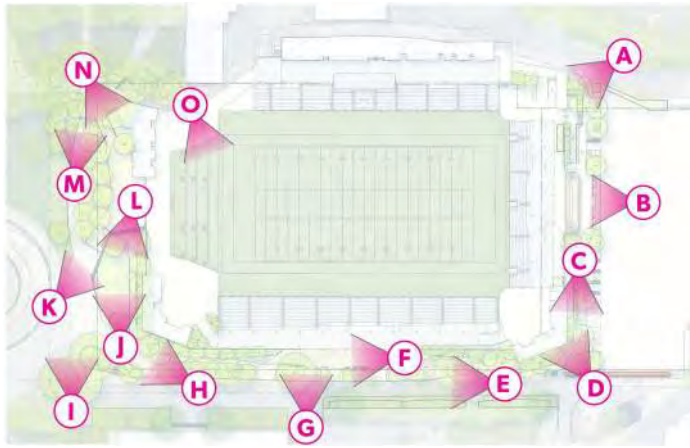
Northwest Site Plan



North West District Enlargement



KEY PLAN



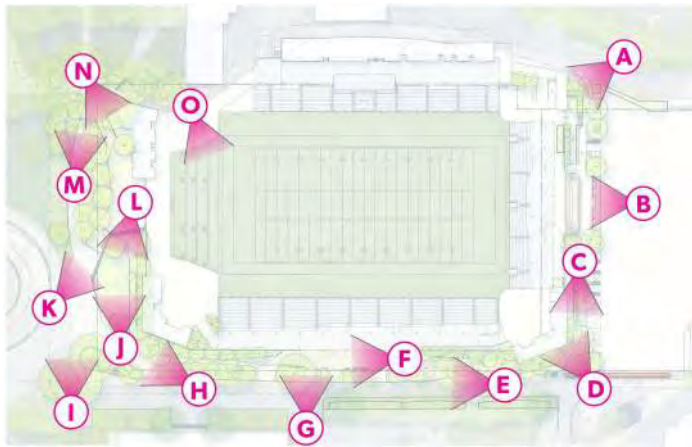
Existing / Proposed



Existing: North West Field Looking South East



Proposed: North West Field Looking South East



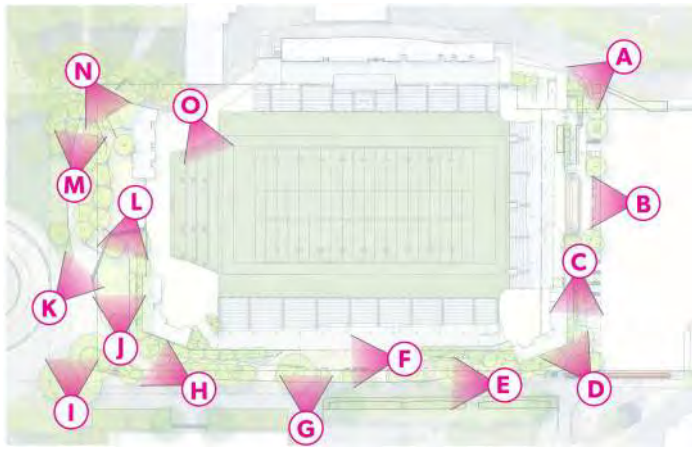
Existing / Proposed



Existing: August Wilson Way and 3rd Ave Intersection Looking South



Proposed: August Wilson Way and 3rd Ave Intersection Looking South



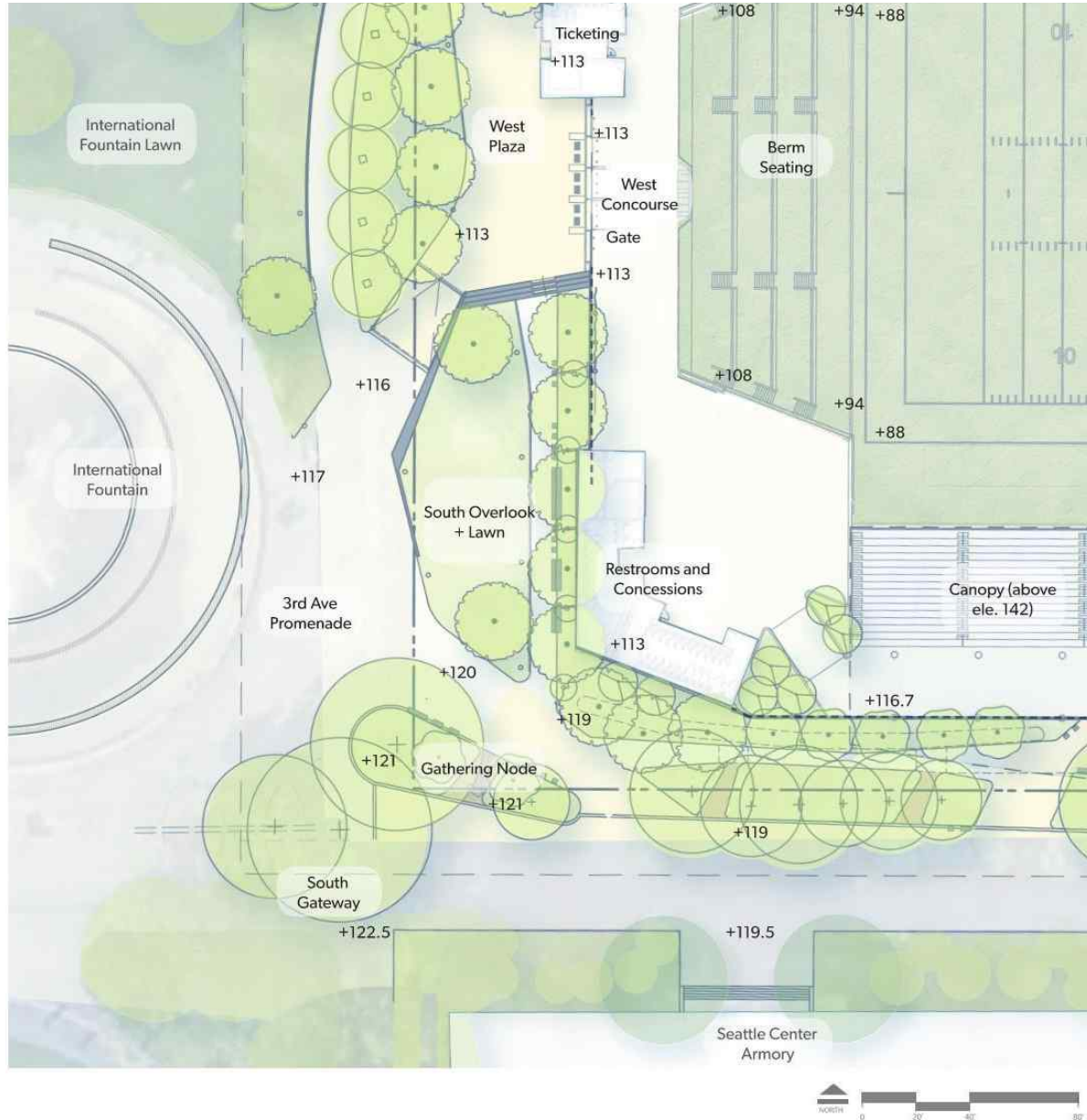
Existing / Proposed



Existing: 3rd Avenue Looking South



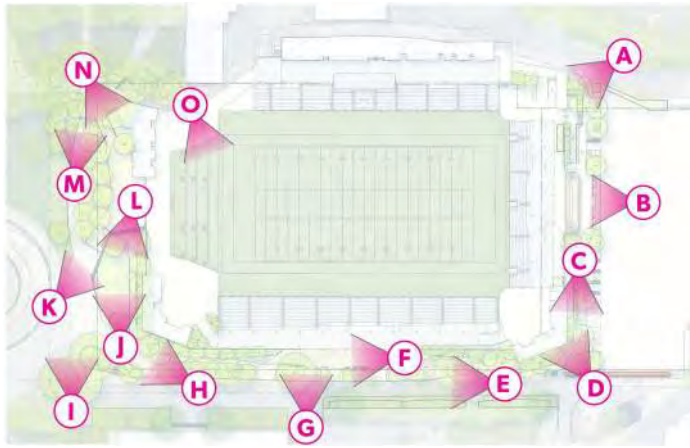
Proposed: West Entry Plaza Looking South



Southwest Site Plan



KEY PLAN



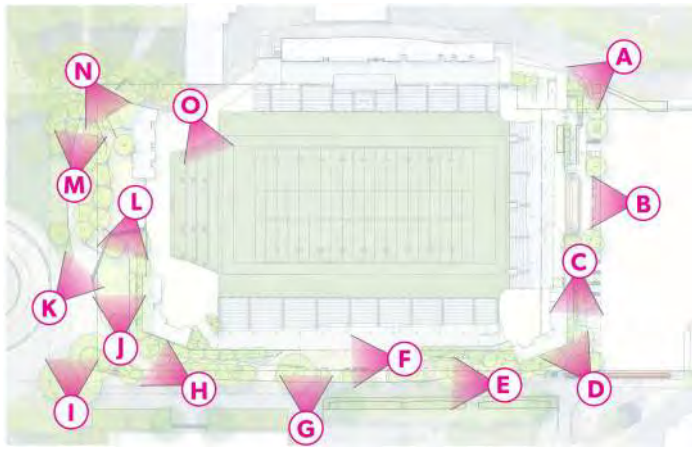
Existing / Proposed



Existing: International Fountain Looking North East



Proposed: International Fountain Looking North East



Existing / Proposed



Existing: Corner of 3rd Avenue Promenade And Harrison Street
Looking North

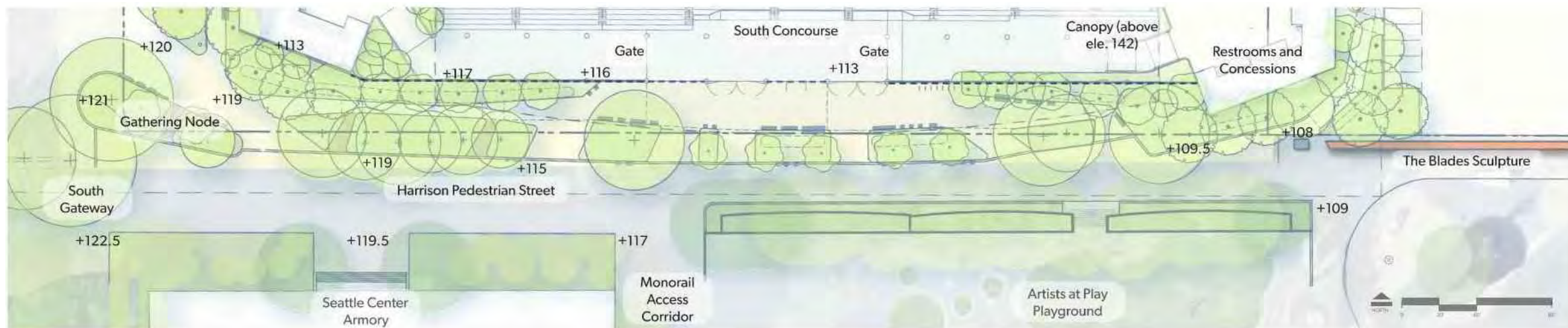


Proposed: West Lawn Looking North

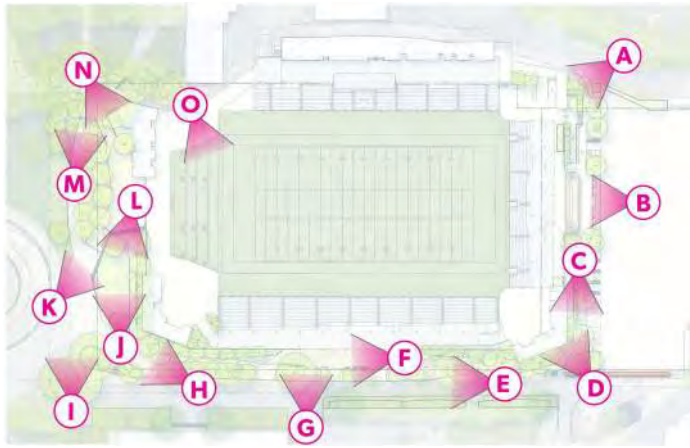


KEY PLAN

South Site Plan



Caption



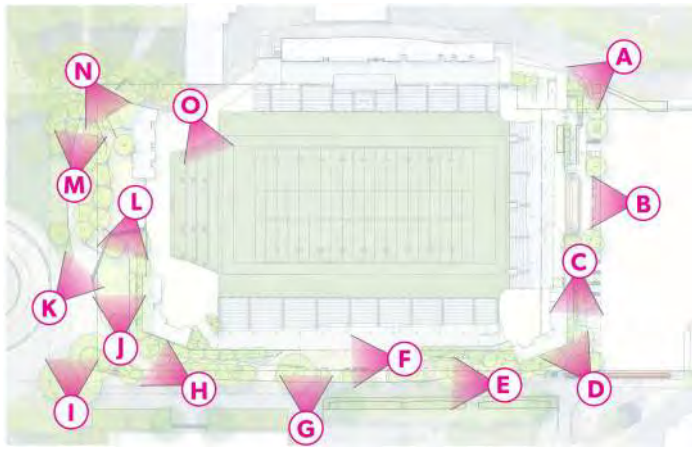
Existing / Proposed



Existing: Harrison Street Looking At International Fountain



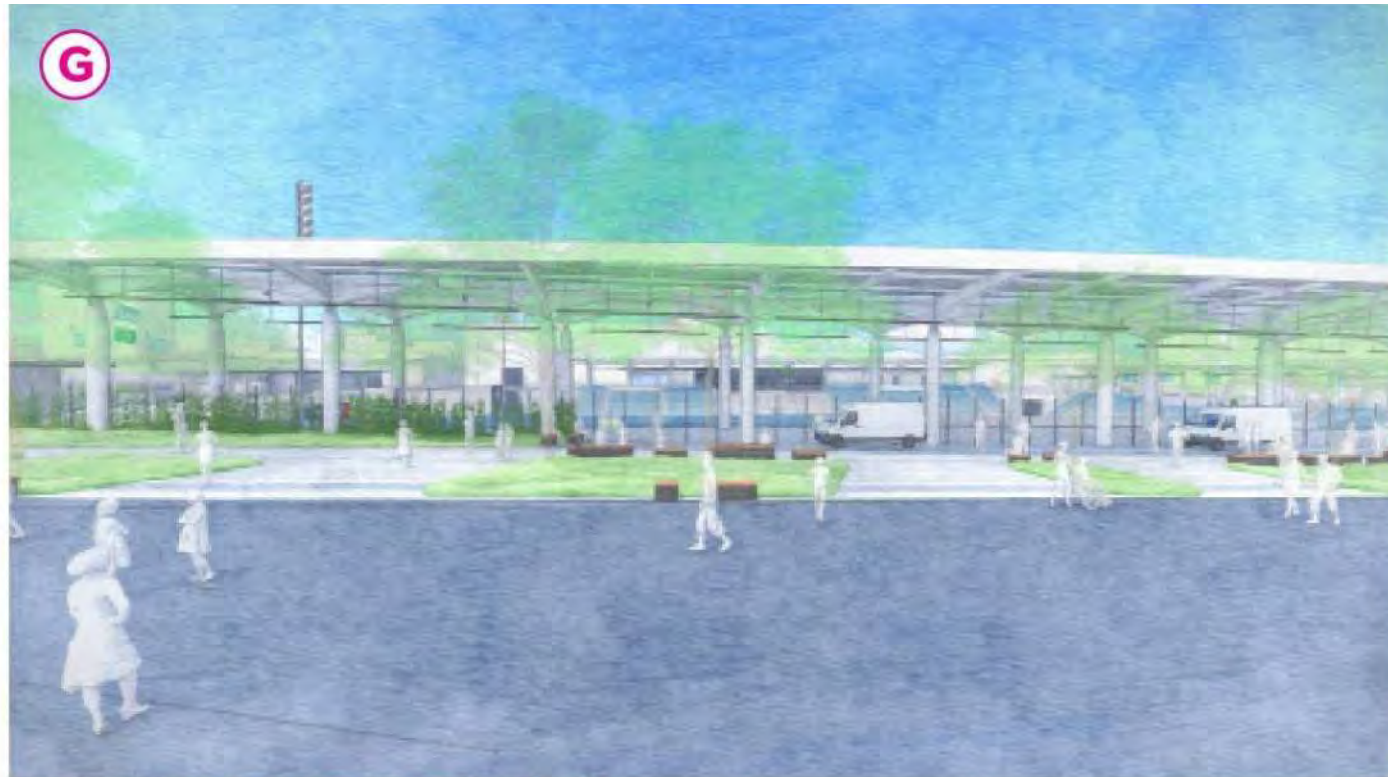
Proposed: Harrison Street Looking At International Fountain



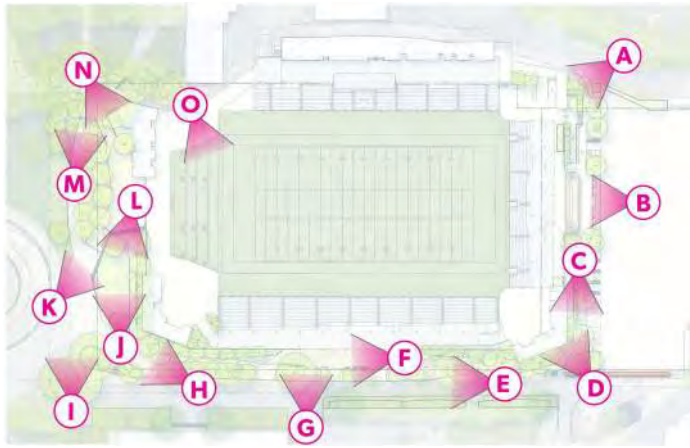
Existing / Proposed



Existing: Artists At Play Looking North



Proposed: Artists At Play Looking North



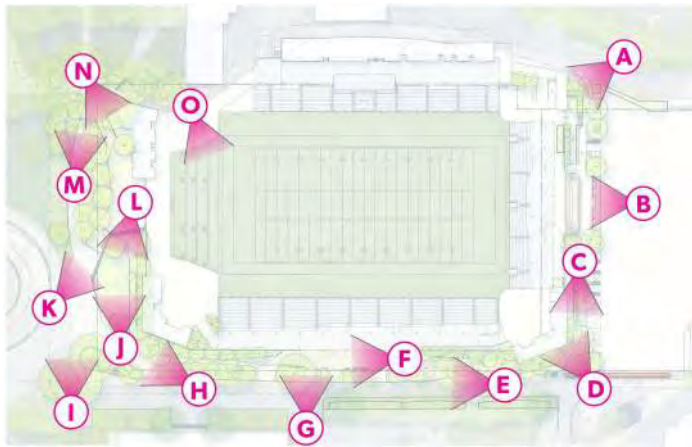
Existing / Proposed



Existing: Harrison Street Looking West



Proposed: Harrison Street Looking West At South Concourse



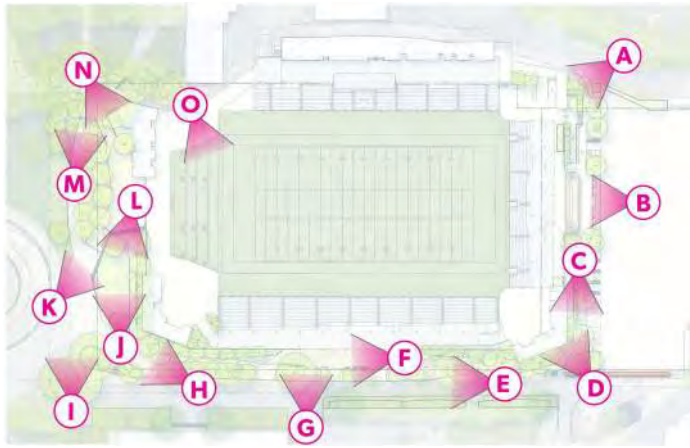
Existing / Proposed



Existing: Harrison Street Looking West



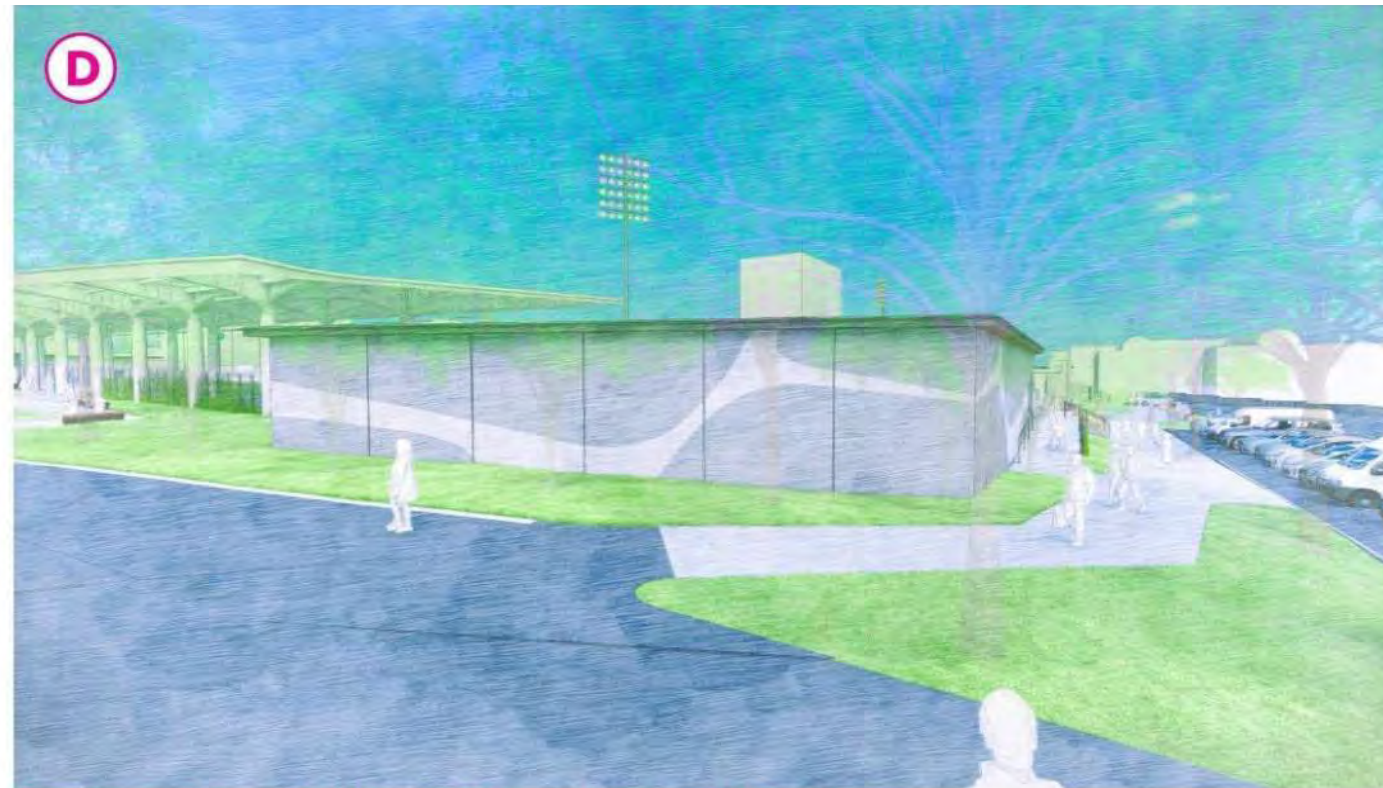
Proposed: Harrison Street Looking West



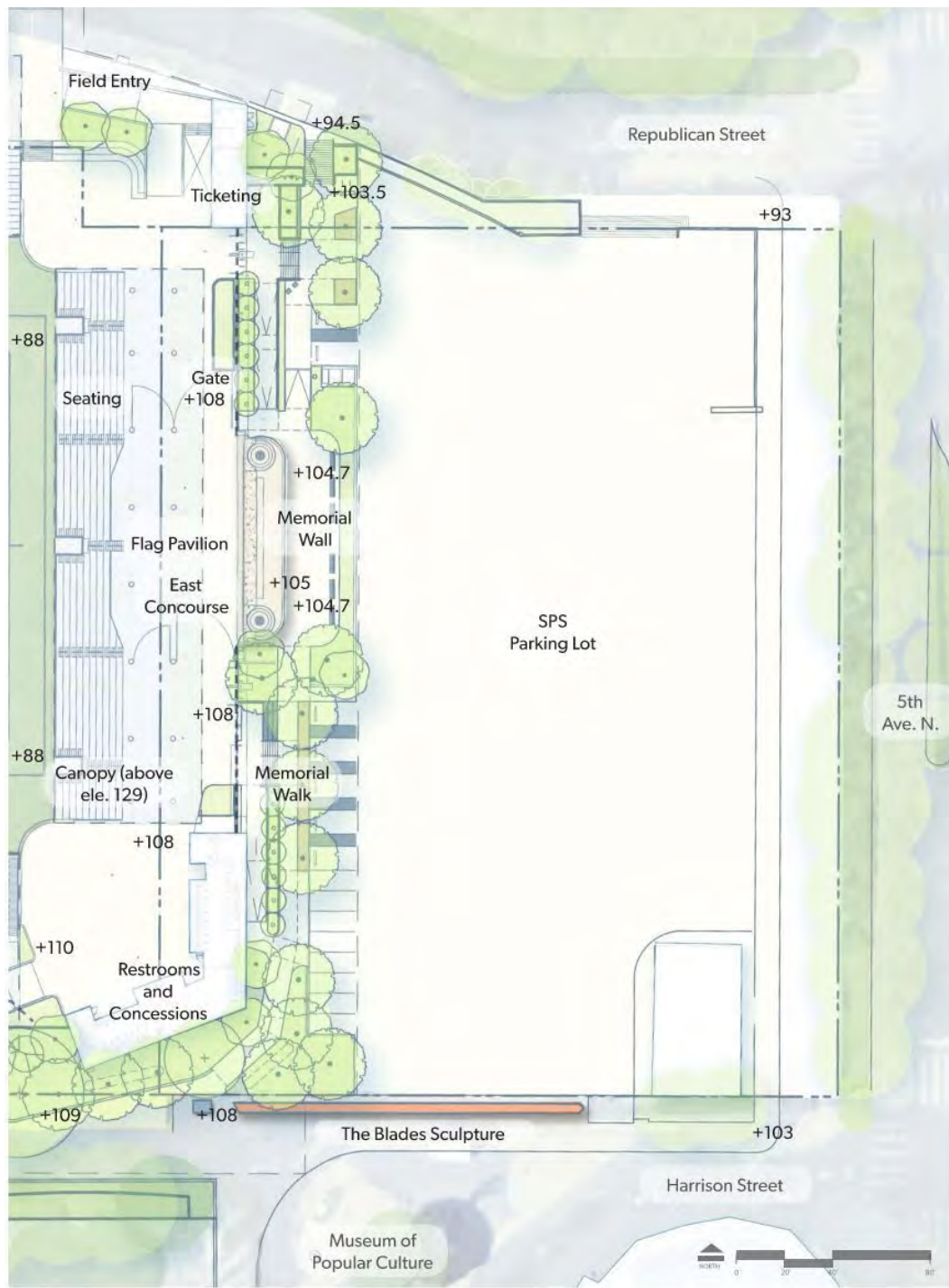
Existing / Proposed



Existing: South East Harrison Street Looking North West



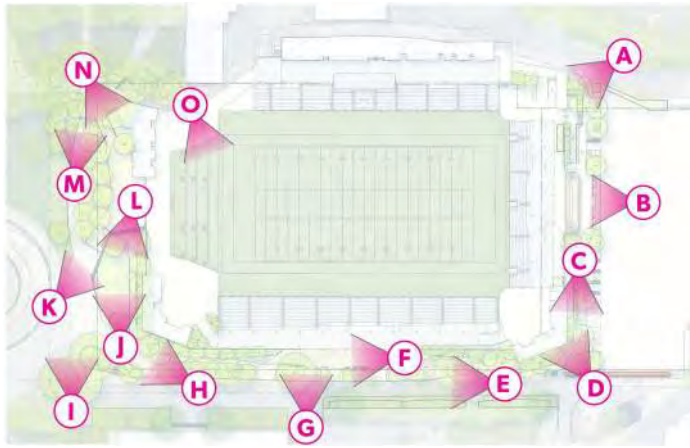
Proposed: South East Harrison Street Looking North West



East Site Plan



KEY PLAN



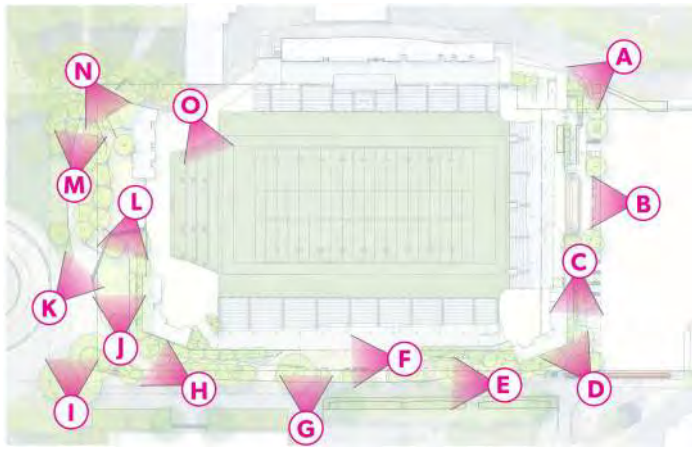
Existing / Proposed



Existing: East Parking Lot Looking South



Proposed: East Parking Lot Looking South



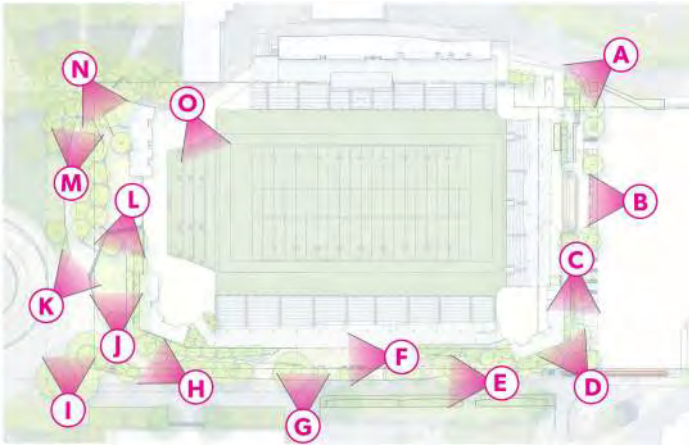
Existing / Proposed



Existing: Memorial Wall Looking West



Proposed: Memorial Wall Looking West



Existing / Proposed



Existing: Memorial Stadium Parking Lot Looking Southwest



Proposed: Memorial Stadium Parking Lot Looking Southwest

Materials

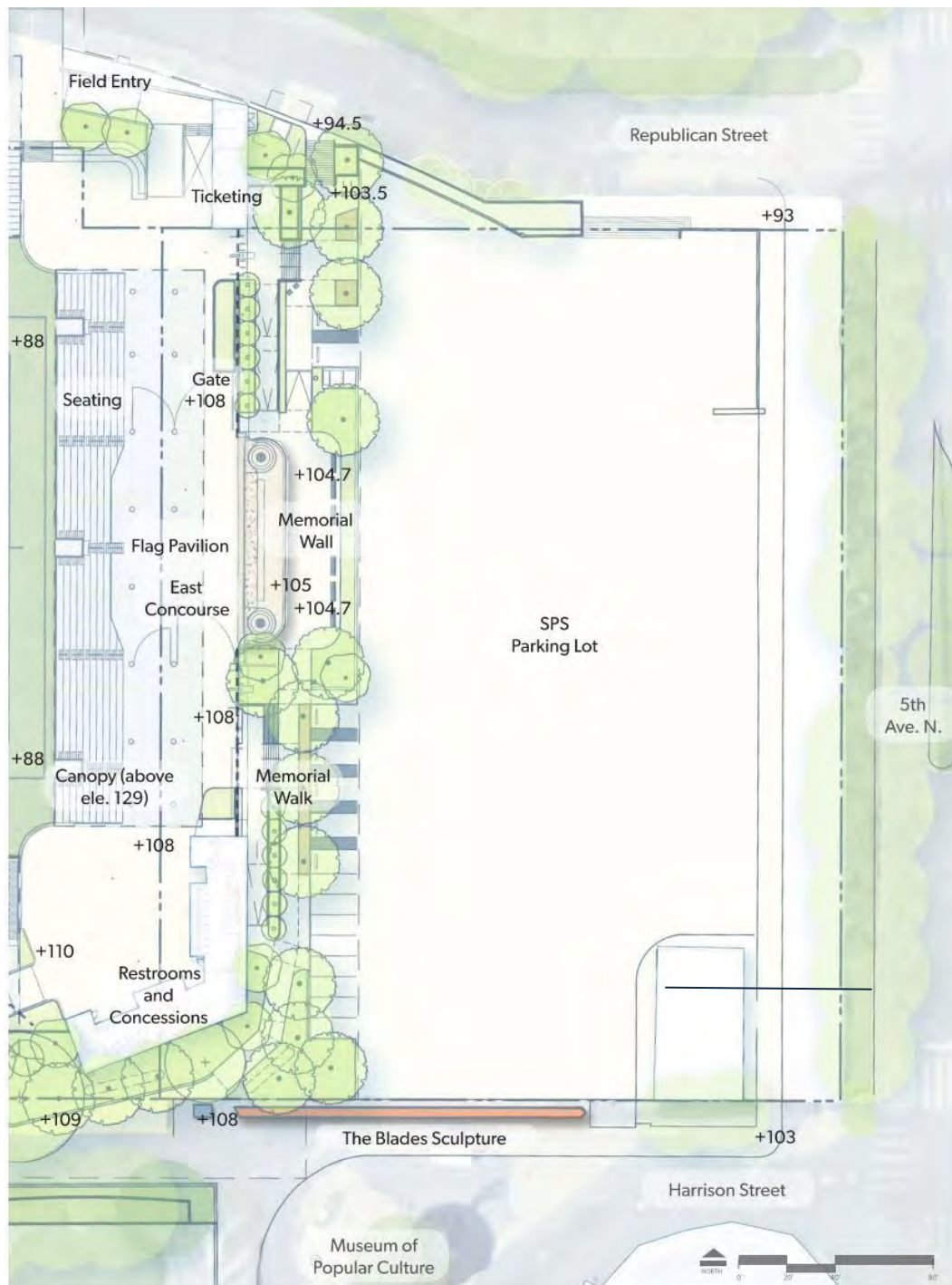


Materials



Materials

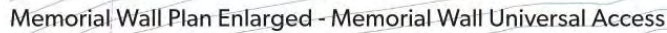




Memorial Site Plan



KEY PLAN



An aerial night photograph of Seattle, Washington. The Space Needle is prominent on the left side of the frame. In the center, there is a large stadium with a green field, likely the Smith Ballpark. The city's lights and the dark water of the Puget Sound are visible in the background. Two horizontal red lines are positioned above and below the word "Lighting".

Lighting

Design Drivers

Greater Context of Seattle Center



Memorial Stadium will cohesively integrate with the larger Seattle Center campus through thoughtful lighting design.

Flexibility for Events and Non-Event Conditions



By designing an illuminated environment that functions seamlessly for both event and non-event scenarios, lighting will define inviting gathering spaces, whether for vibrant social events or quiet strolls through Seattle Center.

Reinforcing Wayfinding and Placemaking

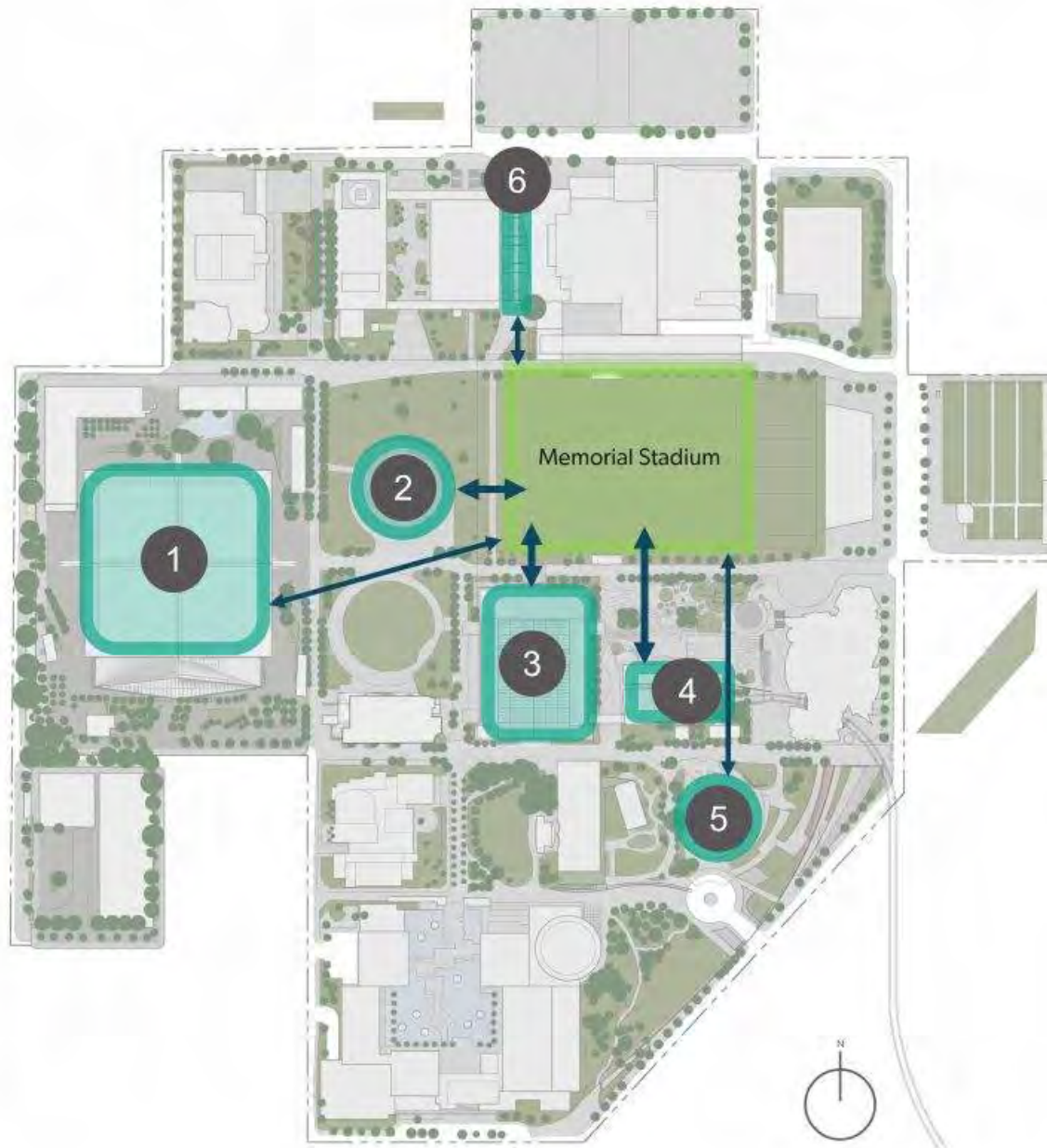


The lighting at Memorial Stadium will help direct visitors between destinations to balance wayfinding and placemaking throughout the site.

Enhance Feelings of Safety and Security



Lighting is essential for creating a sense of safety and security after dark, allowing visitors to move confidently throughout their surroundings.



Campus Scale Connection

Memorial Stadium exists within the larger Seattle Center campus context, with connecting views between other high-visibility elements.



1 Climate Pledge Arena



2 International Fountain



3 Armory



4 Monorail Station



5 Space Needle



6 McCaw Hall

Campus Elements After Dark

Large scale campus elements have different visual qualities during the day and after dark.



1 Climate Pledge Arena



2 International Fountain



3 Armory



4 Monorail Station



5 Space Needle



6 McCaw Hall

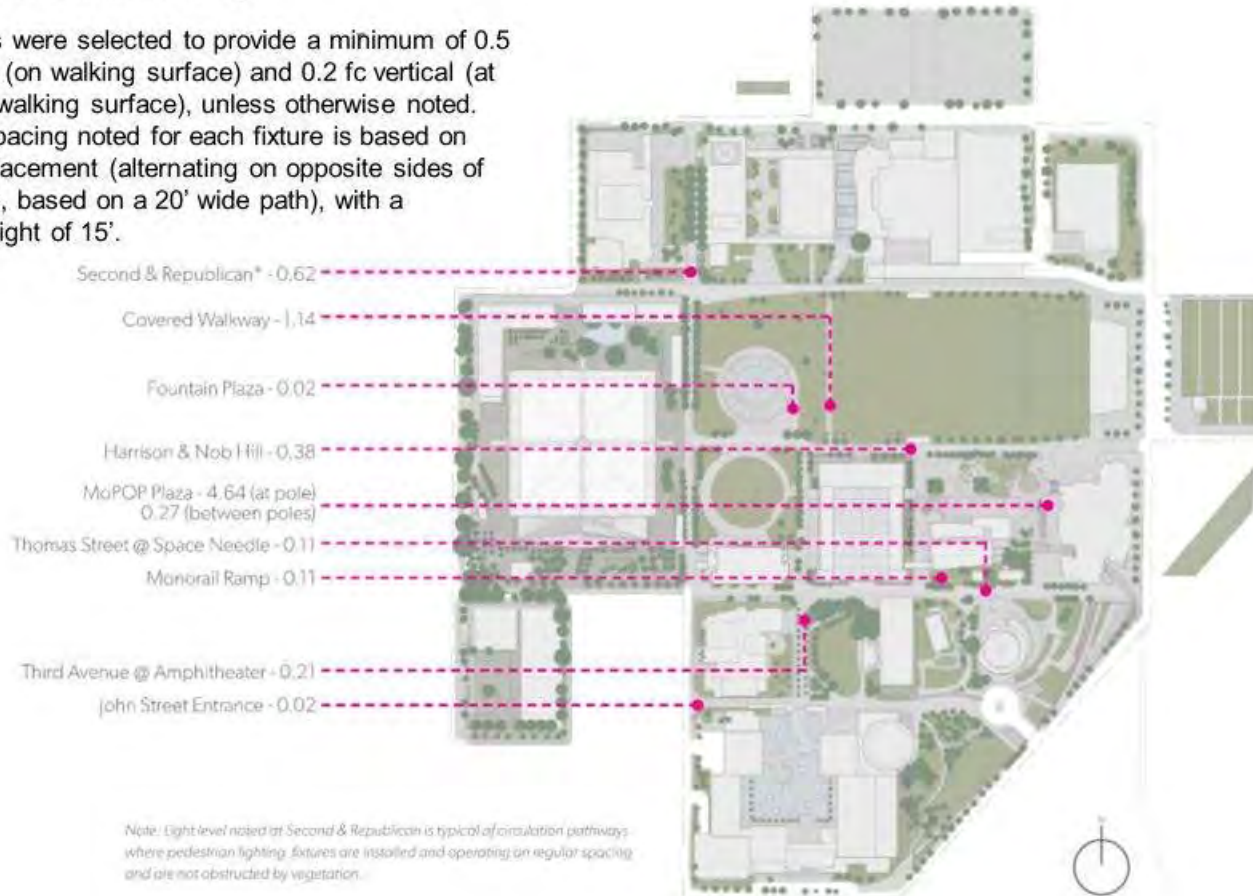


Safety & Security

Creating an inviting after dark environment helps to improve perceptions of safety and security by supporting greater use of pedestrian spaces at night.

Criteria for Pedestrian Walkway:

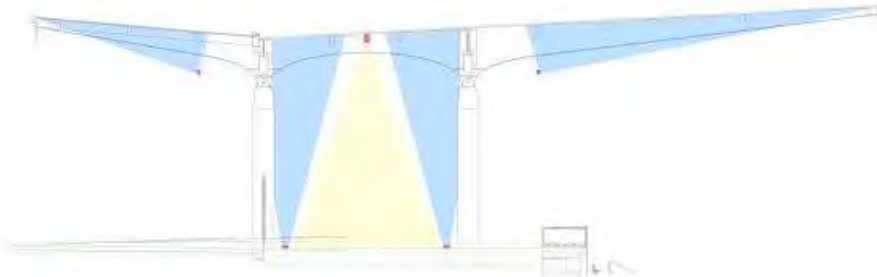
Light fixtures were selected to provide a minimum of 0.5 fc horizontal (on walking surface) and 0.2 fc vertical (at 5'-6" above walking surface), unless otherwise noted. On center spacing noted for each fixture is based on staggered placement (alternating on opposite sides of walking path, based on a 20' wide path), with a mounting height of 15'.



Canopies



The color changing light on the canopies will establish a unique identity of the site within the Seattle Center campus.



Color Changing Light

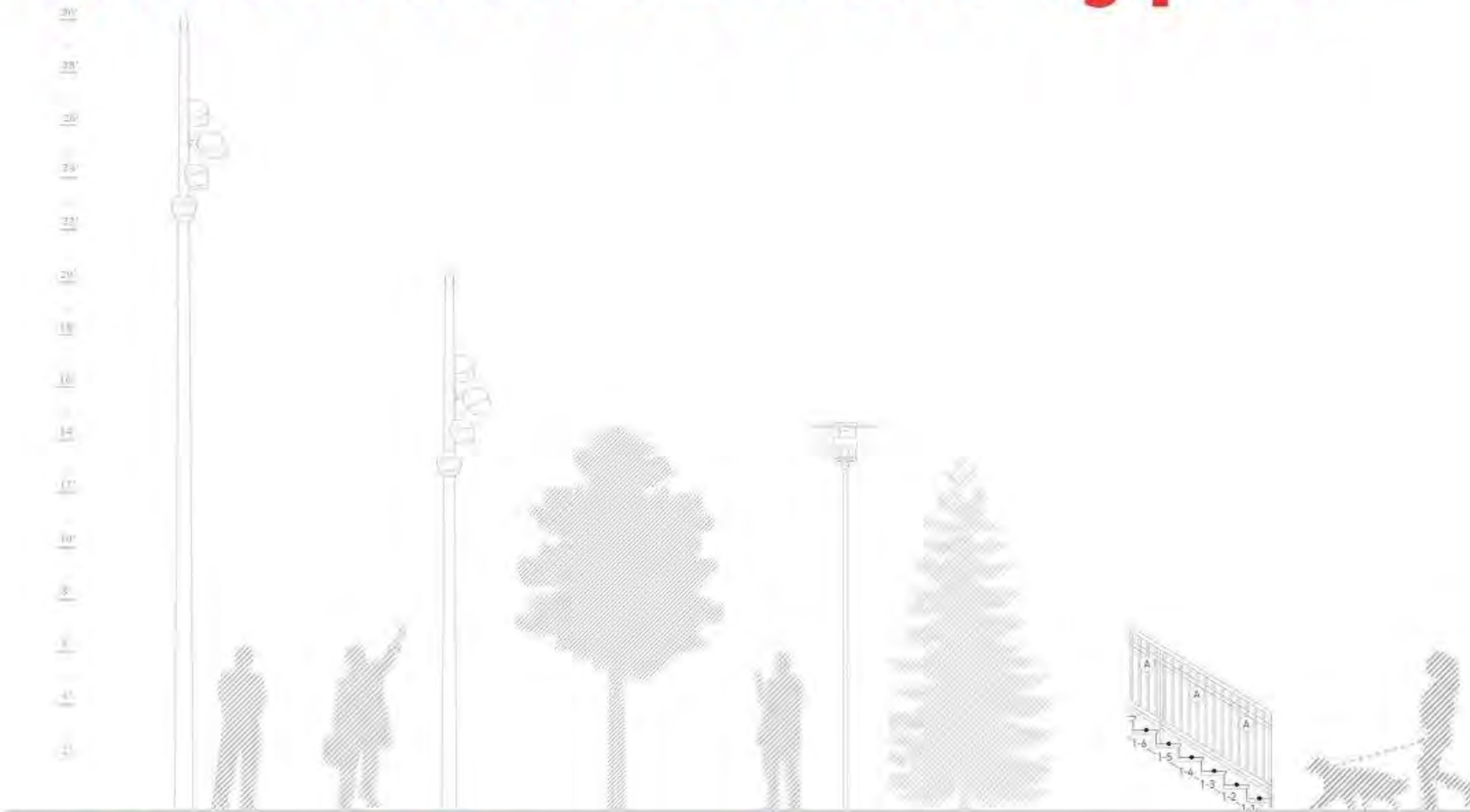



White Light


The concourses will feature direct, uniform lighting to clearly define circulation zones.





Circulation Fixture Types



 **Selux**
Olivio - 30' pole

 **Selux**
Olivio - 20' pole

 **Louis Poulsen**
Albertslund - 15' pole

 **Klik**
LED Pod 40 - Handrail



Selux
Olivio



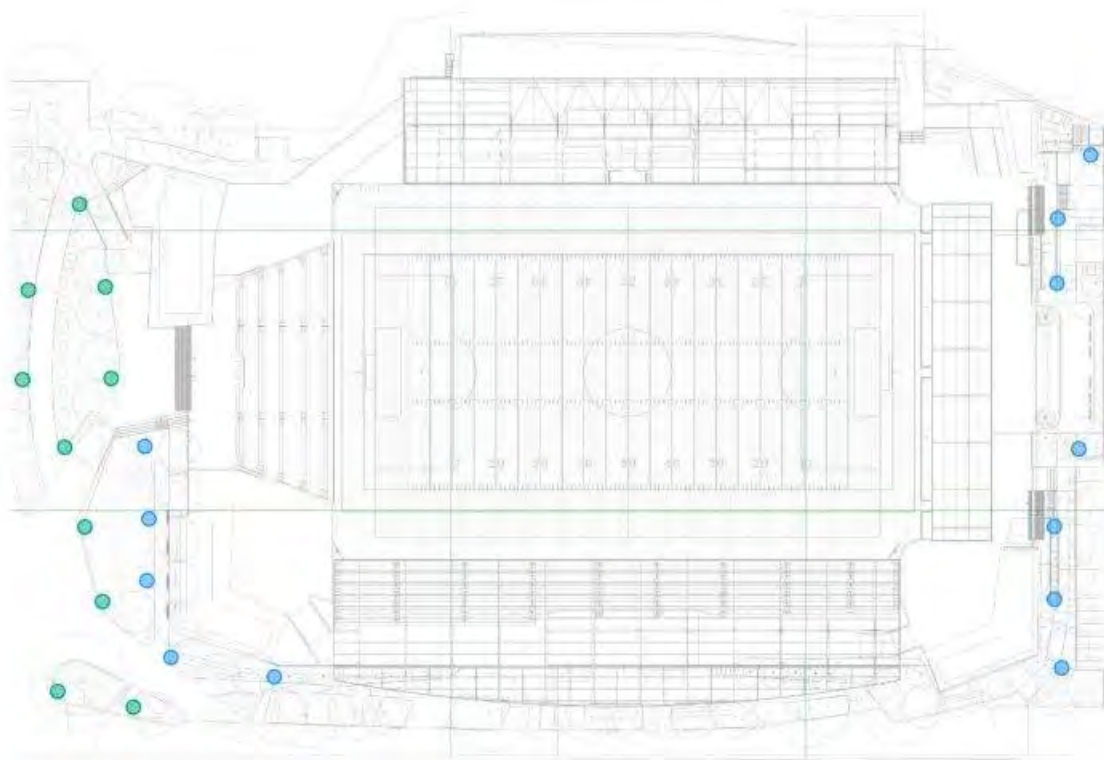
Louis Poulsen
Albertslund



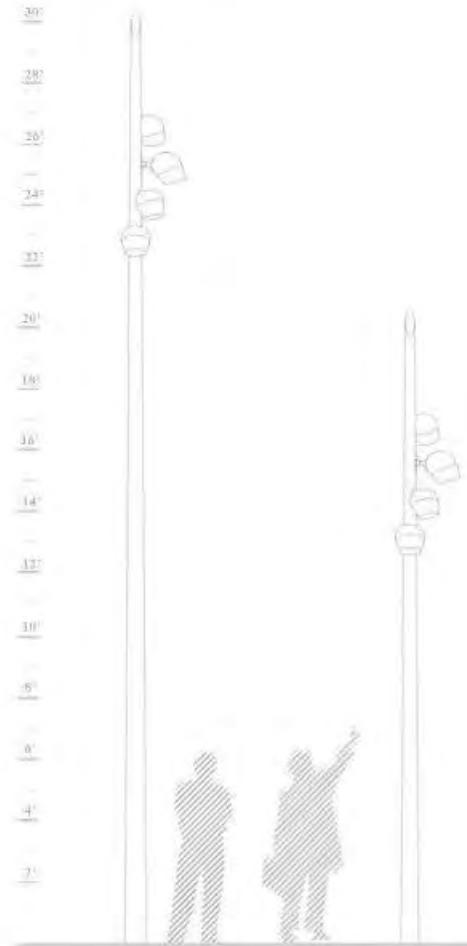
Klik
LED Pod 40

Circulation Luminaires

Selux Olivio



30' pole 20' pole



Selux
Olivio

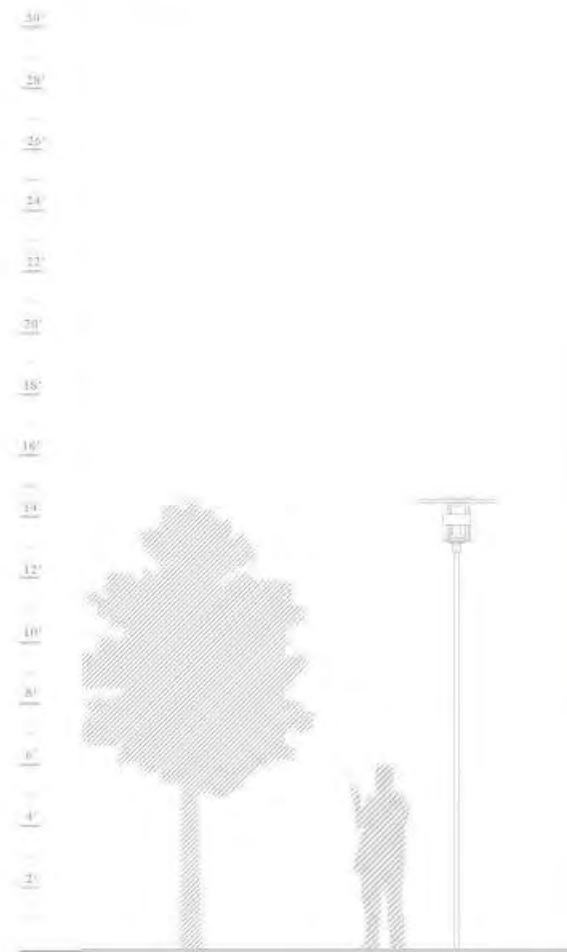


Circulation Luminaires

Louis Poulsen Albertslund



15' pole

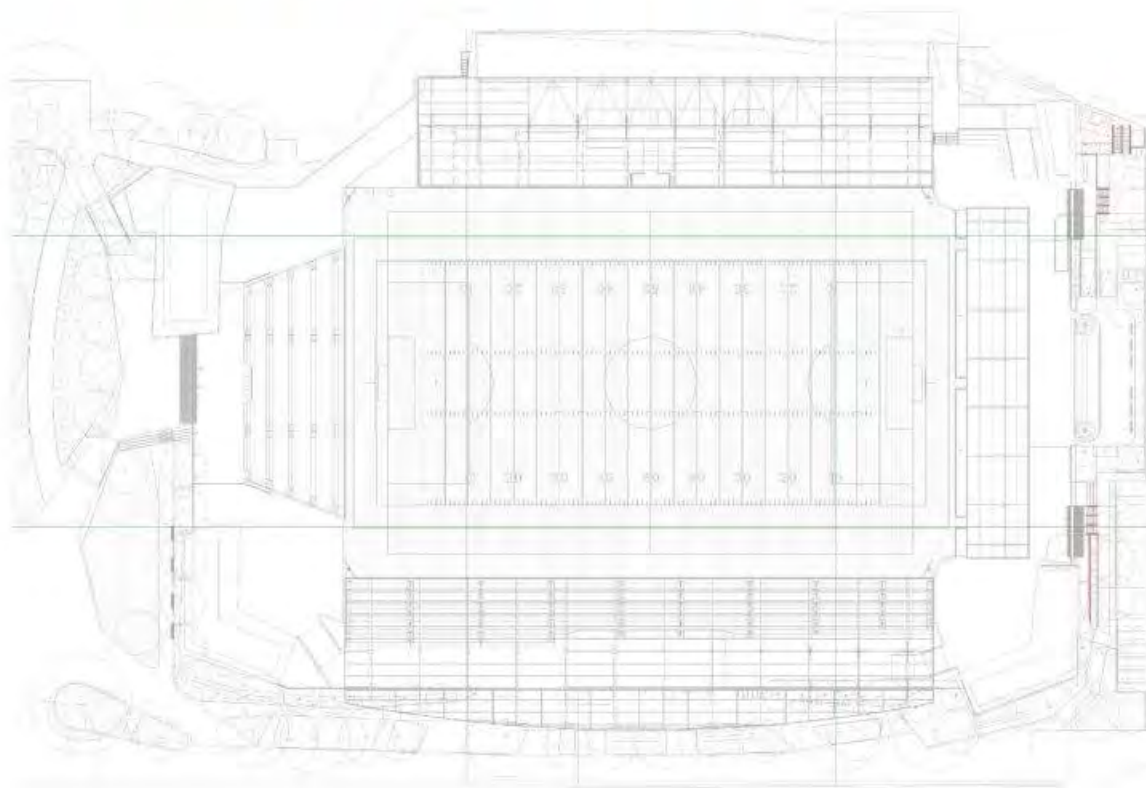


Louis Poulsen
Albertslund



Circulation Luminaires

Klik LED Pod Handrail



..... Handrail

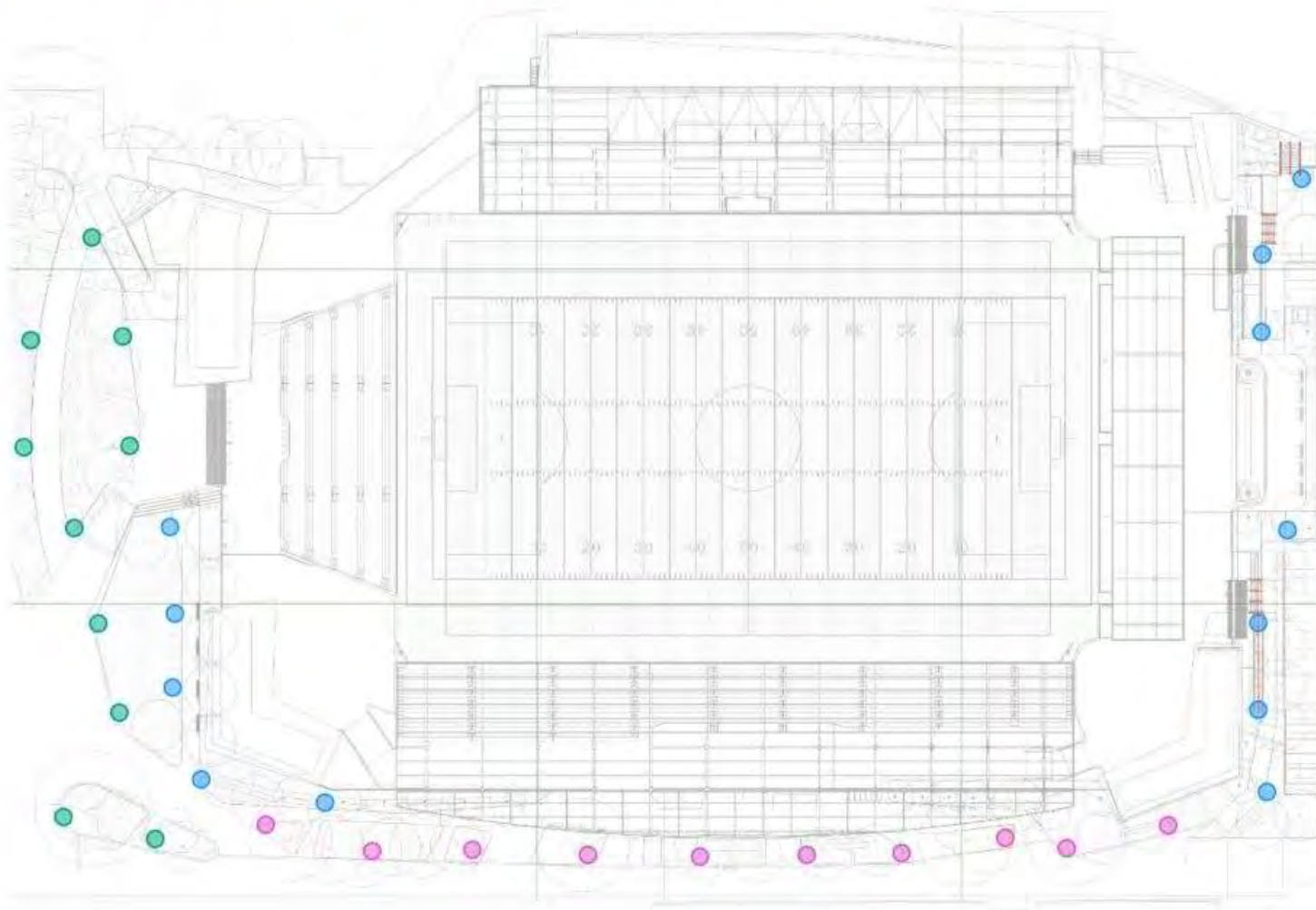


Klik
LED Pod 40



Circulation Luminaires

-  **Selux**
Olivio
30' pole
-  **Selux**
Olivio
20' pole
-  **Louis Poulsen**
Albertslund
15' pole
-  **Klik**
LED Pod 40
Handrail



Selux
Olivio



Louis Poulsen
Albertslund



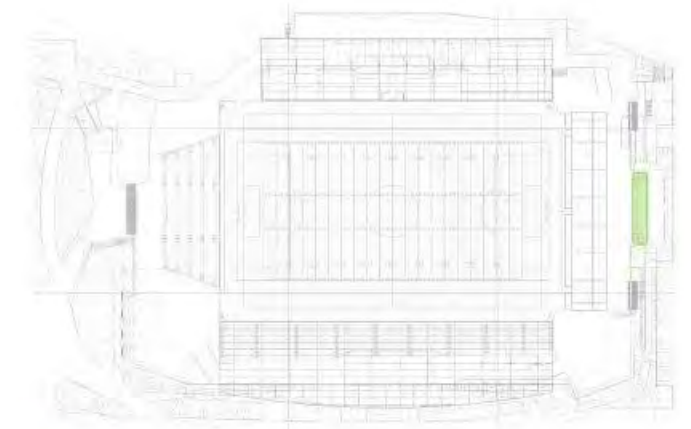
Klik
LED Pod 40

Memorial Wall

Soft, quiet illumination highlights the solemnity of the Memorial Wall.



Existing Memorial Wall



Color Changing Light White Light

Memorial Wall

An aerial photograph of a city, likely Seattle, featuring a large stadium (CenturyLink Field) and surrounding urban development. The entire image is overlaid with a semi-transparent red filter. The text "Discussion + Thank you" is centered in white.

Discussion + Thank you



GENERATOR
STUDIO

SWIFT COMPANY LLC